

DIN 1804

Slotted locknuts



• Material

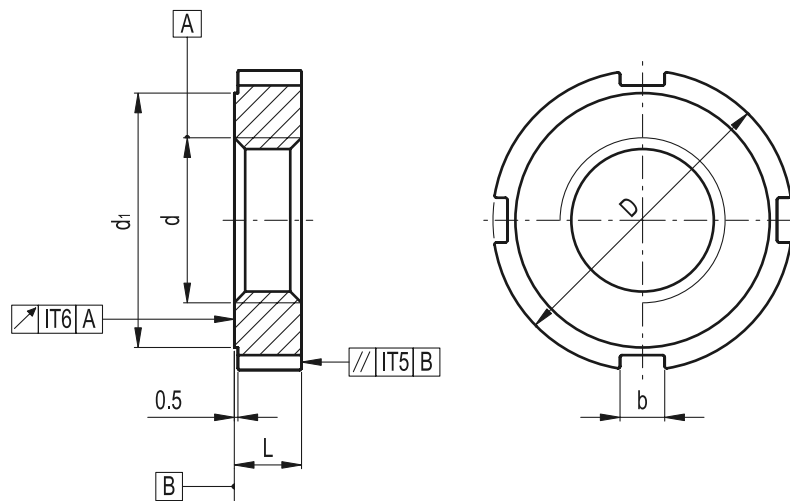
- Execution **W**: tempered steel class 5 (tensile strength 500N/mm²).
 - Execution **H**: tempered and hardened HRC 60±2 steel class 5 (tensile strength 500 N/mm²).
- The threaded part is not hardened.

Special executions on request (For sufficient quantities)

Supplied with other sizes up to M200x3.

Features and applications

On DIN 1804 slotted locknuts the ground surface d1 stands proud and should be used as a mating surface.



Standard Elements	Main Dimensions					Δ	C-Spanner DIN 1810
Description	D h11	L h14	b	d 4H	d1	g	
DIN 1804-M8x1.*	20	5	4	M8x1	16	10	A 16-20
DIN 1804-M10x1.*	25	6	5	M10x1	20	17	A 25-28
DIN 1804-M12x1.5.*	28	6	5	M12x1.5	23	20	A 25-28
DIN 1804-M14x1.5.*	30	7	5	M14x1.5	25	28	A 30-32
DIN 1804-M16x1.5.*	32	7	5	M16x1.5	27	31	A 30-32
DIN 1804-M18x1.5.*	34	8	6	M18x1.5	28	38	A 34-36
DIN 1804-M20x1.5.*	36	8	6	M20x1.5	30	40	A 34-36
DIN 1804-M22x1.5.*	40	9	6	M22x1.5	34	56	A 40-42
DIN 1804-M24x1.5.*	42	9	6	M24x1.5	36	59	A 40-42
DIN 1804-M26x1.5.*	45	10	7	M26x1.5	38	74	A 45-50
DIN 1804-M28x1.5.*	50	10	7	M28x1.5	43	95	A 45-50
DIN 1804-M30x1.5.*	50	10	7	M30x1.5	43	97	A 45-50
DIN 1804-M32x1.5.*	52	11	7	M32x1.5	45	103	A 52-55
DIN 1804-M35x1.5.*	55	11	7	M35x1.5	48	115	A 52-55
DIN 1804-M38x1.5.*	58	11	8	M38x1.5	50	120	A 58-62
DIN 1804-M40x1.5.*	62	12	8	M40x1.5	54	140	A 58-62
DIN 1804-M42x1.5.*	62	12	8	M42x1.5	54	155	A 58-62
DIN 1804-M45x1.5.*	68	12	8	M45x1.5	60	175	A 68-75
DIN 1804-M48x1.5.*	75	13	8	M48x1.5	67	245	A 68-75
DIN 1804-M50x1.5.*	75	13	8	M50x1.5	67	230	A 68-75
DIN 1804-M52x1.5.*	80	13	10	M52x1.5	70	291	A 80-90
DIN 1804-M55x1.5.*	80	13	10	M55x1.5	70	273	A 80-90
DIN 1804-M58x1.5.*	90	13	10	M58x1.5	80	345	A 80-90
DIN 1804-M60x1.5.*	90	13	10	M60x1.5	80	324	A 80-90

*Complete the description of the standard item needed by adding W (tempered steel) or H (tempered and hardened HRC 60±2 steel).