

# GN 444.2

## Eye nuts

- Material**

Black-oxide steel, class 5.8 (tensile strength 500 N/mm<sup>2</sup>).

- Applications**

GN 444.2 eye nuts can be used together with threaded studs of different lengths. They are used mainly for assembly equipment and connections.



# GN 732

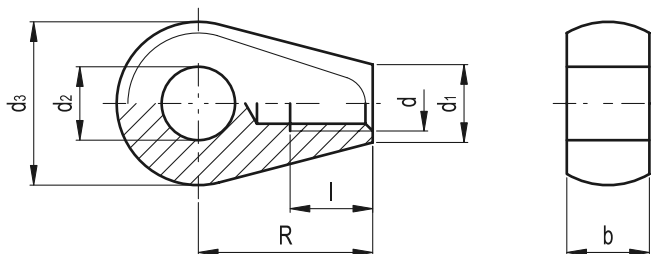
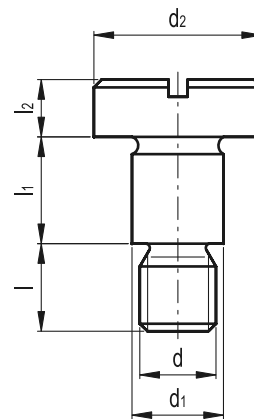
## Cylinder head shoulder bolts

- Case**

Class 5.8 steel, hardened all round (hardening depth 0.2 - 0.4 mm). Tensile strength 500 N/mm<sup>2</sup>.

- End**

Machined and ground.



Standard Elements	Main dimensions								$\Delta/\Delta$
Description	d	d1	d2 H7	d3 -0.3	R	b -0.15	l min.	g	
GN 444.2-M6-8	M6	8.5	8	18	19	9	9	18	
GN 444.2-M8-10	M8	11	10	20	24	12	11	30	
GN 444.2-M10-12	M10	13.5	12	25	28	14	14	52	
GN 444.2-M12-16	M12	16	16	32	34	17	16	11	

Standard Elements	Main dimensions							$\Delta/\Delta$
Description	d	<sup>-0.05</sup> <sub>d1-0.08</sub>	d2	l	<sup>+0.25</sup> <sub>l1+0.13</sub>	l2	g	
GN 732-M6-8-5	M6	8	14	8	5	4	8	
GN 732-M6-8-6	M6	8	14	8	6	4	9	
GN 732-M6-8-8	M6	8	14	8	8	4	9	
GN 732-M6-8-9	M6	8	14	8	9	4	9	
GN 732-M6-8-10	M6	8	14	8	10	4	10	
GN 732-M8-10-10	M8	10	16	11	10	5	17	
GN 732-M8-10-12	M8	10	16	11	12	5	18	
GN 732-M10-12-12	M10	12	19	13	12	6	29	
GN 732-M10-12-14	M10	12	19	13	14	6	30	
GN 732-M10-12-16	M10	12	19	13	16	6	33	