

GN 1524

Eye screws

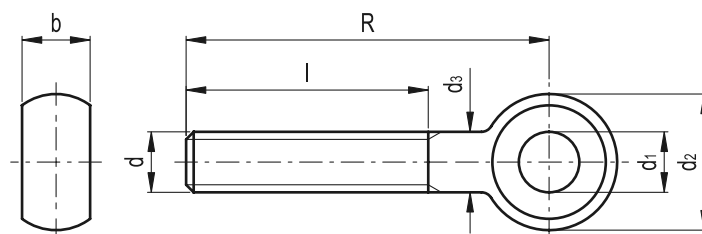


• Material

Black-oxide turned steel, class 5.8 (tensile strength 500 N/mm²), with rolled threading.

Features and applications

GN 1524 eye screws are only partly similar to eye screws DIN 444 (see page 608). Contrary to DIN 444, they offer a longer threaded bolt. Various dimensions and in particular the tolerances on GN 1524 are wider and hence do not comply with DIN specification.



| Standard Elements | Main dimensions | | | | | | $\Delta \Delta$ |
|-------------------|-----------------|-----|--------|---------|----|-----|-----------------|
| Description | d | R | b -0.2 | d2 -0.4 | d3 | l | g |
| GN 1524-M6-50 | M6 | 50 | 8 | 12 | 6 | 40 | 10 |
| GN 1524-M6-60 | M6 | 60 | 8 | 12 | 6 | 40 | 15 |
| GN 1524-M6-70 | M6 | 70 | 8 | 12 | 6 | 40 | 15 |
| GN 1524-M6-80 | M6 | 80 | 8 | 12 | 6 | 40 | 20 |
| GN 1524-M8-50 | M8 | 50 | 10 | 16 | 8 | 40 | 25 |
| GN 1524-M8-60 | M8 | 60 | 10 | 16 | 8 | 45 | 25 |
| GN 1524-M8-70 | M8 | 70 | 10 | 16 | 8 | 45 | 30 |
| GN 1524-M8-80 | M8 | 80 | 10 | 16 | 8 | 45 | 35 |
| GN 1524-M8-100 | M8 | 100 | 10 | 16 | 8 | 45 | 40 |
| GN 1524-M10-50 | M10 | 50 | 12 | 20 | 10 | 38 | 35 |
| GN 1524-M10-60 | M10 | 60 | 12 | 20 | 10 | 46 | 40 |
| GN 1524-M10-70 | M10 | 70 | 12 | 20 | 10 | 50 | 45 |
| GN 1524-M10-80 | M10 | 80 | 12 | 20 | 10 | 50 | 55 |
| GN 1524-M10-100 | M10 | 100 | 12 | 20 | 10 | 50 | 65 |
| GN 1524-M10-120 | M10 | 120 | 12 | 20 | 10 | 50 | 75 |
| GN 1524-M12-50 | M12 | 50 | 14 | 25 | 12 | 35 | 60 |
| GN 1524-M12-60 | M12 | 60 | 14 | 25 | 12 | 42 | 70 |
| GN 1524-M12-70 | M12 | 70 | 14 | 25 | 12 | 52 | 75 |
| GN 1524-M12-80 | M12 | 80 | 14 | 25 | 12 | 60 | 85 |
| GN 1524-M12-100 | M12 | 100 | 14 | 25 | 12 | 60 | 100 |
| GN 1524-M12-120 | M12 | 120 | 14 | 25 | 12 | 60 | 115 |
| GN 1524-M12-130 | M12 | 130 | 14 | 25 | 12 | 60 | 125 |
| GN 1524-M16-70 | M16 | 70 | 18 | 32 | 16 | 49 | 140 |
| GN 1524-M16-80 | M16 | 80 | 18 | 32 | 16 | 59 | 155 |
| GN 1524-M16-100 | M16 | 100 | 18 | 32 | 16 | 77 | 180 |
| GN 1524-M16-120 | M16 | 120 | 18 | 32 | 16 | 80 | 210 |
| GN 1524-M16-140 | M16 | 140 | 18 | 32 | 16 | 80 | 245 |
| GN 1524-M16-160 | M16 | 160 | 18 | 32 | 16 | 80 | 275 |
| GN 1524-M20-100 | M20 | 100 | 22 | 40 | 20 | 75 | 300 |
| GN 1524-M20-120 | M20 | 120 | 22 | 40 | 20 | 95 | 346 |
| GN 1524-M20-140 | M20 | 140 | 22 | 40 | 20 | 100 | 390 |
| GN 1524-M20-160 | M20 | 160 | 22 | 40 | 20 | 100 | 438 |
| GN 1524-M24-160 | M24 | 160 | 28 | 50 | 24 | 120 | 685 |
| GN 1524-M24-240 | M24 | 240 | 28 | 50 | 24 | 120 | 965 |