

Hexagon nuts

• **Material**

Black-oxide steel class 10 (tensile strength 1000 N/mm²).

Features and applications

DIN 6330 hexagon nuts are used on clamping applications which require frequent clamping and releasing operations.

The spherical seating combined with DIN 6319 (see page 624) concave washers adjusts positioning inaccuracies.

Hexagon nuts

• **Material**

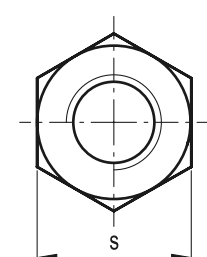
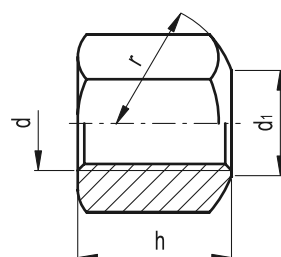
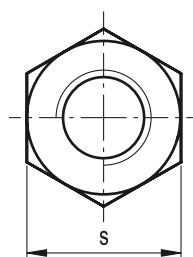
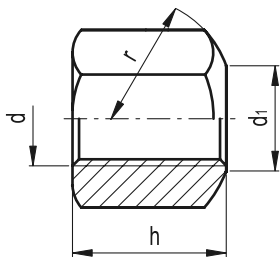
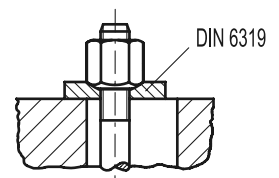
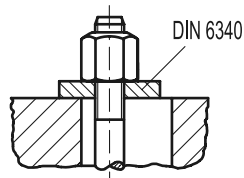
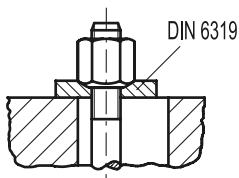
AISI 303 stainless steel.

Features and applications

DIN 6330 hexagon nuts are used on clamping applications which require frequent clamping and releasing operations.

The spherical seating combined with DIN 6319 (see page 624) concave washers adjusts positioning inaccuracies.

Stainless steel, thanks to its high resistance to corrosion, allows the application of these hexagon nuts on machines and equipment in those sectors where laws or particular hygienic, climatic and environmental factors make it mandatory to use corrosion resistant materials.



Standard Elements	Main dimensions					△△
Description	d	d1 H14	h	r	s	g
DIN 6330-M8-B	M8	9	12	11	13	9
DIN 6330-M10-B	M10	11.5	15	15	16	20
DIN 6330-M12-B	M12	14	18	17	18	28
DIN 6330-M14-B	M14	16	21	20	22	45
DIN 6330-M16-B	M16	18	24	22	24	53
DIN 6330-M20-B	M20	22	30	27	30	110
DIN 6330-M24-B	M24	26	36	32	36	195
DIN 6330-M30-B	M30	32	45	41	46	405
DIN 6330-M36-B	M36	38	54	50	55	715

Standard Elements	Main dimensions					△△
Description	d	d1 H14	h	r	s	g
DIN 6330-M8-B-NI	M8	9	12	11	13	9
DIN 6330-M10-B-NI	M10	11.5	15	15	16	9
DIN 6330-M12-B-NI	M12	14	18	17	18	29
DIN 6330-M14-B-NI	M14	16	21	20	22	48
DIN 6330-M16-B-NI	M16	18	24	22	24	57
DIN 6330-M20-B-NI	M20	22	30	27	30	114