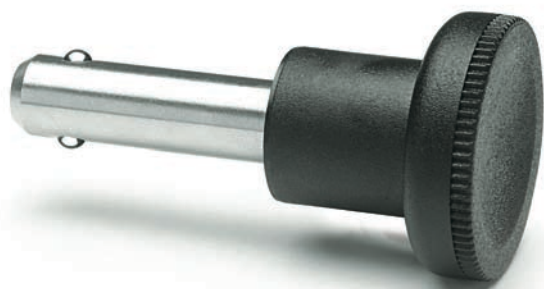


Balls lock pins



- **Pin**
AISI 303 stainless steel.
- **Balls and spring**
Stainless steel.
Ø d from 6 to 8: one ball.
Ø d from 10 to 12: two balls.
- **Knurled knob**
Polyamide based (PA) technopolymer, black colour, matte finish. Resistant to solvents, oils, greases and other chemical agents.
- **Working temperature**
From -30°C to +80°C.

Accessories on request

GN 111 (see page 584) ball chain with metal ring to avoid loss or misplacement when the pin is in the rest position.

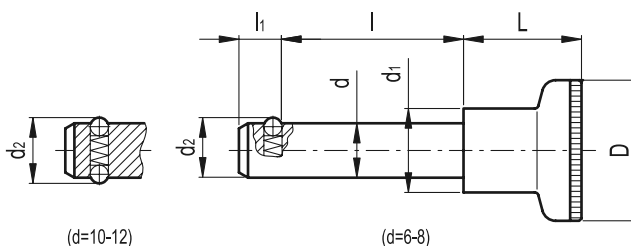
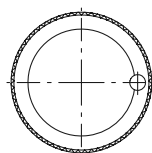
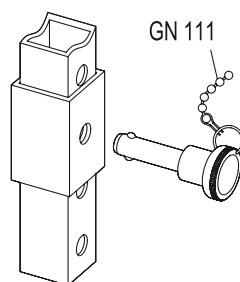
Features and applications

The two balls of GN 124 are not provided with a locking mechanism but they are kept in position by a spring. This is the reason why their tensile strength is limited compared to GN 113 and GN 113.3.

GN 124 balls lock pins are suitable for quick fixation or connection of parts to be machined, in particular for elements which need to be removed and inserted continuously.

AISI 303 stainless steel, thanks to its high resistance to corrosion, allows the application of these lock pins on machines and equipment in those sectors where laws or particular hygienic, climatic and environmental factors make it mandatory to use corrosion resistant materials.

Application example



Standard Elements	Main dimensions							Mounting hole D12	Axial holding force [N]	Double sided shearing force [KN]	△ g
	d h9	d2	D	d1	l	l1	L				
GN 124-6-10	6	6.5	25	14.5	10	5	22.5	6	8	22	15
GN 124-6-15	6	6.5	25	14.5	15	5	22.5	6	8	22	18
GN 124-6-20	6	6.5	25	14.5	20	5	22.5	6	8	22	21
GN 124-6-25	6	6.5	25	14.5	25	5	22.5	6	8	22	24
GN 124-6-30	6	6.5	25	14.5	30	5	22.5	6	8	22	27
GN 124-6-50	6	6.5	25	14.5	50	5	22.5	6	8	22	33
GN 124-8-15	8	8.7	25	14.5	15	6.3	22.5	8	15	40	20
GN 124-8-20	8	8.7	25	14.5	20	6.3	22.5	8	15	40	25
GN 124-8-25	8	8.7	25	14.5	25	6.3	22.5	8	15	40	30
GN 124-8-30	8	8.7	25	14.5	30	6.3	22.5	8	15	40	35
GN 124-8-50	8	8.7	25	14.5	50	6.3	22.5	8	15	40	40
GN 124-10-15	10	12	31	18.5	15	8.7	27	10	30	62	35
GN 124-10-20	10	12	31	18.5	20	8.7	27	10	30	62	40
GN 124-10-25	10	12	31	18.5	25	8.7	27	10	30	62	45
GN 124-10-30	10	12	31	18.5	30	8.7	27	10	30	62	50
GN 124-10-50	10	12	31	18.5	50	8.7	27	10	30	62	55
GN 124-12-20	12	14.5	31	18.5	20	9.5	27	12	32	90	45
GN 124-12-30	12	14.5	31	18.5	30	9.5	27	12	32	90	50
GN 124-12-40	12	14.5	31	18.5	40	9.5	27	12	32	90	55
GN 124-12-50	12	14.5	31	18.5	50	9.5	27	12	32	90	60