

VAD. VAD+I

ELESA Original design

Solid handwheels

• Material

Aluminium, epoxy resin coating.

Execution **G**: for gravity indicators.

Execution **P**: for positive drive indicators, provided with rear flange and crown gear wheel in acetal resin based (POM) technopolymer. Black-oxide steel screw and anchor pin.

• Colour

Black, matte finish.

• Assembly

H7 reamed through hole.

• Revolving handle (only VAD+I handwheels)

Type I.601+x (see page 395) high-resilience polypropylene based (PP) technopolymer, black colour, matte finish.



7

484

Rotary controls

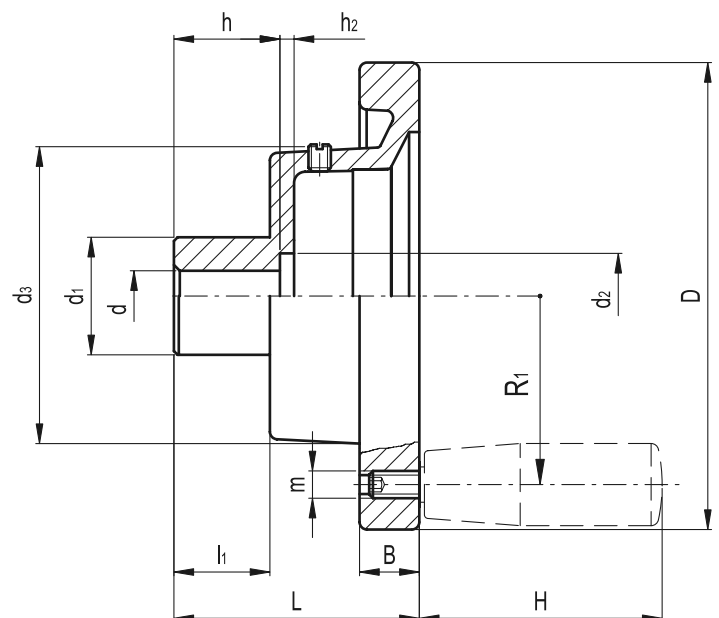
Indicator choice (to be ordered separately)

To choose the indicator see the table below "Possible assembly with indicators". See also Assembly instructions type G (see page 465) or type P (see page 471).

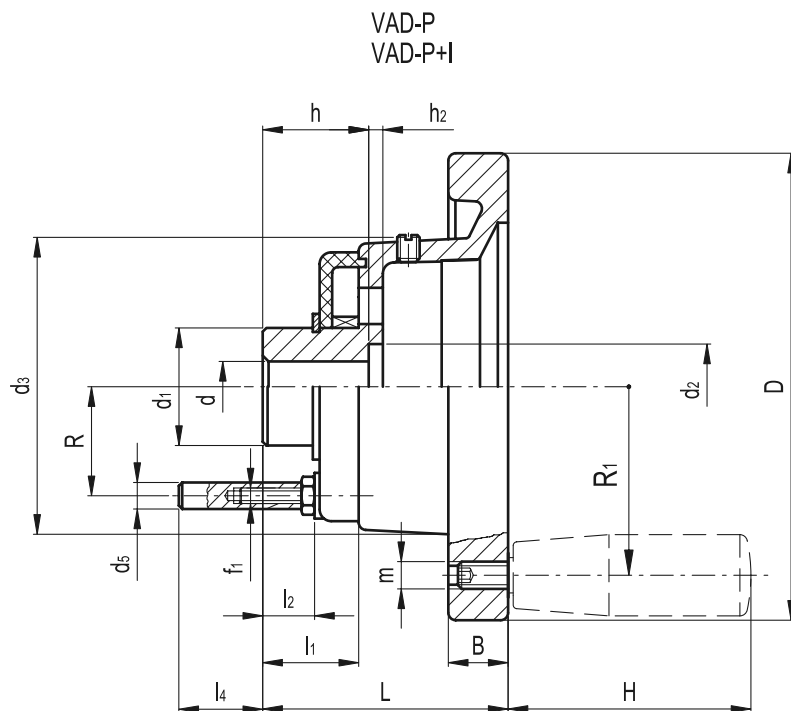


Application example with GA12 indicator

VAD-G
VAD-G+I



Standard Elements		Main dimensions								Hole		Handle			Δ
Code	Description	D	L	B	d1	d2	d3	h2	l1	d H7	h	H	m	R1	g
CE.28501	VAD.80-GXX1 A-10	80	48	13	26	20.5	56	3.5	15.5	10	16	-	-	-	175
CE.28551	VAD.100-GXX1 A-10	100	58	14	28	20.5	56	3.5	17.5	10	17	-	-	-	235
CE.28601	VAD.125-GXX2 A-12	125	61	15	31	25.5	76	4	18	12	18	-	-	-	370
CE.28651	VAD.160-GXX2 A-14	160	68	18	36	29	78	4	19	14	20	-	-	-	625
CE.28701	VAD.160-GXX5 A-14	160	64	18	36	25.5	120	4	20	14	23.5	-	-	-	760
CE.28721	VAD.200-GXX2 A-18	200	75	20.5	42	33	79	4.5	21	18	24	-	-	-	980
CE.28731	VAD.250-GXX2 A-22	250	81.5	23	48	37	80	4.5	24.5	22	28	-	-	-	1500
CE.28511	VAD.80-GXX1 A-10+I	80	48	13	26	20.5	56	3.5	15.5	10	16	40	M6	33.5	200
CE.28561	VAD.100-GXX1 A-10+I	100	58	14	28	20.5	56	3.5	17.5	10	17	50	M6	42.5	270
CE.28611	VAD.125-GXX2 A-12+I	125	61	15	31	25.5	76	4	18	12	18	65	M8	54	440
CE.28661	VAD.160-GXX2 A-14+I	160	68	18	36	28	78	4	19	14	20	80	M10	71	705
CE.28711	VAD.160-GXX5 A-14+I	160	64	18	36	25.5	120	4	20	14	23.5	80	M10	71	840
CE.28726	VAD.200-GXX2 A-18+I	200	75	20.5	42	33	79	4.5	21	18	24	80	M10	89	1065
CE.28736	VAD.250-GXX2 A-22+I	250	81.5	23	48	37	80	4.5	24.5	22	28	90	M10	113	1595



Standard Elements		Main dimensions													Hole		Handle			△△
Code	Description	D	L	B	d1	d2	d3	d5	f1	h2	l1	l2	l4	R	dh7	h	H	m	R1	g
CE.28502	VAD.80-PXX1 A-10	80	55	13	20	20.5	56	6	M4	3.5	18.5	11.5	13.6	19	10	22.5	-	-	-	205
CE.28552	VAD.100-PXX1 A-10	100	63.5	14	20	20.5	56	6	M4	3.5	18.5	11.5	13.6	19	10	22.5	-	-	-	265
CE.28602	VAD.125-PXX2 A-12	125	65.5	15	32	22.5	76	6	M4	4	19	12	13.1	28.5	12	22.5	-	-	-	450
CE.28652	VAD.160-PXX2 A-14	160	71.5	18	32	25.5	78	6	M4	4	20	13	12.1	28.5	14	23.5	-	-	-	680
CE.28702	VAD.160-PXX5 A-14	160	64	18	32	25.5	120	6	M4	4	20	13	12.1	28.5	14	23.5	-	-	-	760
CE.28512	VAD.80-PXX1 A-10+I	80	55	13	20	20.5	56	6	M4	3.5	18.5	11.5	13.6	19	10	22.5	40	M6	33.5	230
CE.28562	VAD.100-PXX1 A-10+I	100	63.5	14	20	20.5	56	6	M4	3.5	18.5	11.5	13.6	19	10	22.5	50	M6	42.5	300
CE.28612	VAD.125-PXX2 A-12+I	125	65.5	15	32	22.5	76	6	M4	4	19	12	13.1	28.5	12	22.5	65	M8	54	520
CE.28662	VAD.160-PXX2 A-14+I	160	71.5	18	32	25.5	78	6	M4	4	20	13	12.1	28.5	14	23.5	80	M10	71	760
CE.28712	VAD.160-PXX5 A-14+I	160	64	18	32	25.5	120	6	M4	4	20	13	12.1	28.5	14	23.5	80	M10	71	840

Possible assembly with indicators																
Code	Description	Code	Description	GA01	GA02	GA05	GA11	GA12	GW12	PA01	PA02	PA05	PA11	PA12	PW12	
CE.28501	VAD.80-GXX1 A-10	CE.28511	VAD.80-GXX1 A-10+I	•	-	-	•	-	-	-	-	-	-	-	-	
CE.28551	VAD.100-GXX1 A-10	CE.28561	VAD.100-GXX1 A-10+I	•	-	-	•	-	-	-	-	-	-	-	-	
CE.28601	VAD.125-GXX2 A-12	CE.28611	VAD.125-GXX2 A-12+I	-	•	-	-	•	•	-	-	-	-	-	-	
CE.28651	VAD.160-GXX2 A-14	CE.28651	VAD.160-GXX2 A-14+I	-	•	-	-	•	•	-	-	-	-	-	-	
CE.28701	VAD.160-GXX5 A-14	CE.28711	VAD.160-GXX5 A-14+I	-	-	•	-	-	-	-	-	-	-	-	-	
CE.28721	VAD.200-GXX2 A-18	CE.28726	VAD.200-GXX2 A-18+I	-	•	-	-	•	•	-	-	-	-	-	-	
CE.28731	VAD.250-GXX2 A-22	CE.28736	VAD.250-GXX2 A-22+I	-	•	-	-	•	•	-	-	-	-	-	-	

CE.28502	VAD.80-PXX1 A-10	CE.28512	VAD.80-PXX1 A-10+I	-	-	-	-	-	-	•	-	-	•	-	-
CE.28552	VAD.100-PXX1 A-10	CE.28562	VAD.100-PXX1 A-10+I	-	-	-	-	-	-	•	-	-	•	-	-
CE.28602	VAD.125-PXX2 A-12	CE.28612	VAD.125-PXX2 A-12+I	-	-	-	-	-	-	-	•	-	-	•	•
CE.28652	VAD.160-PXX2 A-14	CE.28662	VAD.160-PXX2 A-14+I	-	-	-	-	-	-	-	•	-	-	•	•
CE.28702	VAD.160-PXX5 A-14	CE.28712	VAD.160-PXX5 A-14+I	-	-	-	-	-	-	-	-	•	-	-	-

Technical data of the indicator on page				466	466	466	467	467	469	472	472	472	473	473	474
---	--	--	--	-----	-----	-----	-----	-----	-----	-----	-----	-----	-----	-----	-----