

GN 558

Control levers with positioning and rest pin

- **Material**

Deburred nodular cast iron, sandblasted matte finish.

- **Assembly**

- Execution **B**: hub with plain hole.

- Execution **K**: hub with H7 reamed hole and keyway in compliance with DIN 6885/2 P9 tolerance (see page A17).

- **Cylindrical handle**

Black-oxide steel.

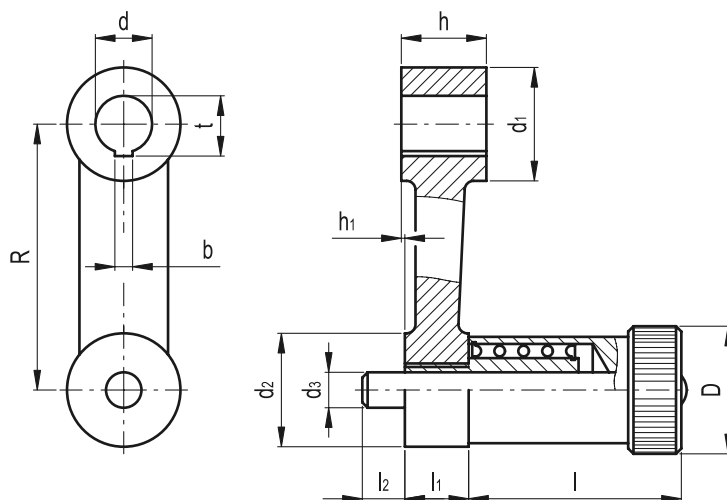
- **Positioning and rest pin**

Hardened steel.

Features and applications

GN 558 control levers are normally used for positioning shafts in pre-determined positions.

The levers can also be supplied not assembled.



Standard Elements	Main dimensions										Mounting hole				⚖
Description	R	D	h ₁	d ₁	d ₂	d ₃ ^{-0.02/-0.04}	l	l ₁	l ₂	d H7	b P9	t	h	g	
GN 558-75-B16	75	32	1	32	28	10	60	18	12	16	-	-	24	544	
GN 558-75-K16	75	32	1	32	28	10	60	18	12	16	5	17.3	24	537	
GN 558-90-B18	90	32	1	34	28	10	60	18	12	18	-	-	26	588	
GN 558-90-K18	90	32	1	34	28	10	60	18	12	18	6	19.7	26	583	
GN 558-110-B20	110	32	1	36	28	10	60	18	12	20	-	-	30	694	
GN 558-110-K20	110	32	1	36	28	10	60	18	12	20	6	21.7	30	689	
GN 558-135-B22	135	32	1	42	28	10	60	18	12	22	-	-	32	823	
GN 558-135-K22	135	32	1	42	28	10	60	18	12	22	6	23.7	32	818	
GN 558-165-B24	165	32	1	44	28	10	60	18	12	24	-	-	36	994	
GN 558-165-K24	165	32	1	44	28	10	60	18	12	24	8	25.7	36	988	