

# VL.140+I

ELESA Original design

## Lobe knobs with revolving handle



- **Material**

Phenolic based (PF) Duroplast. Resistant to solvents, oils, greases and other chemical agents.

- **Colour**

Black, glossy finish.

- **Revolving handle**

Type I.281+X (see page 393) Duroplast, black colour, glossy finish.

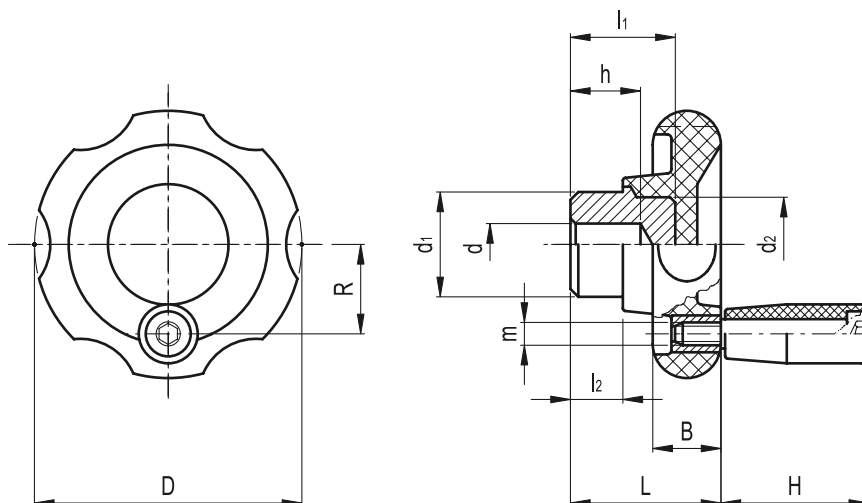
- **Assembly**

Black-oxide steel hub, with pre-drilled blind hole.

6

433

Control elements



Standard Elements		Main dimensions							Hole dimensions		Handle dimensions			△△
Code	Description	D	L	B	d <sub>1</sub>	d <sub>2</sub>	l <sub>1</sub>	l <sub>2</sub>	d -0.1	h	H	m	R	g
74431	VL.140/80+I	82	40	19	24	20	23	12	6	15	40	M6	26	180
74521	VL.140/100+I	99	44	20	36	30	31	14	8	22	50	M8	32	385
74621	VL.140/130+I	129	47	22	40	40	30	13	8	20	65	M8	43	585