

# I.138

## Revolving handles



- **Material**  
Phenolic based (PF) Duroplast. Resistant to solvents, oils, greases and other chemical agents.
- **Colour**  
Black, glossy finish.
- **Assembly**  
Plain through hole.



# SI.134

## Revolving handles



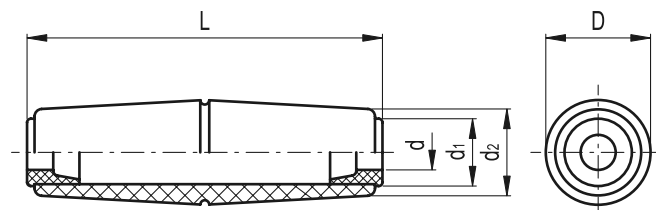
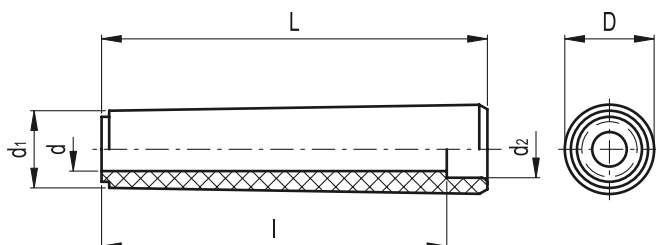
- **Material**  
Phenolic based (PF) Duroplast. Resistant to solvents, oils, greases and other chemical agents.
- **Colour**  
Black, glossy finish with equatorial groove.
- **Assembly**  
Plain through hole with polyamide based (PA) technopolymer guide bosses in both ends.



5

402

Fixed, revolving, fold-away handles



Standard Elements		Main dimensions			Through hole			△△
Code	Description	L	D	d <sub>1</sub>	d	d <sub>2</sub>	l	g
19601	I.138/97-8	95	22	19	7.7	14	85	34
19602	I.138/97-9	95	22	19	8.5	14	85	32
19603	I.138/97-10	95	22	19	10.2	14	85	30

Standard Elements		Main dimensions					△△
Code	Description	L	D	d	d <sub>1</sub>	d <sub>2</sub>	g
55701	SI.134/105-6	105	29	6	18	23	52
55711	SI.134/105-7	105	29	7	18	23	52
55721	SI.134/105-8	105	29	8	18	23	51
55731	SI.134/105-10	105	29	10	18	23	50



**elessa+GANter**

ELESA and GANTER models all rights reserved in accordance with the law. Always mention the source when reproducing our drawings.