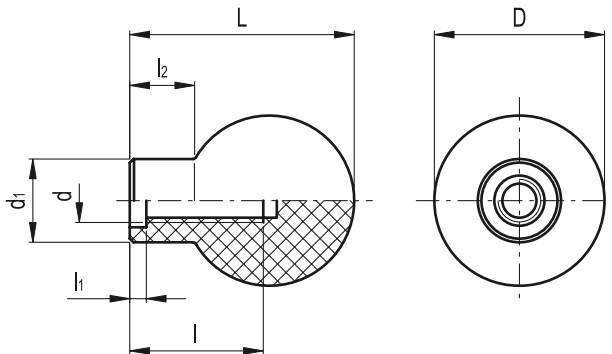


P.111

Handles



- **Material**
Phenolic based (PF) Duroplast. Resistant to solvents, oils, greases and other chemical agents.
- **Colour**
Black, glossy finish.
- **Assembly**
Tapped blind hole.



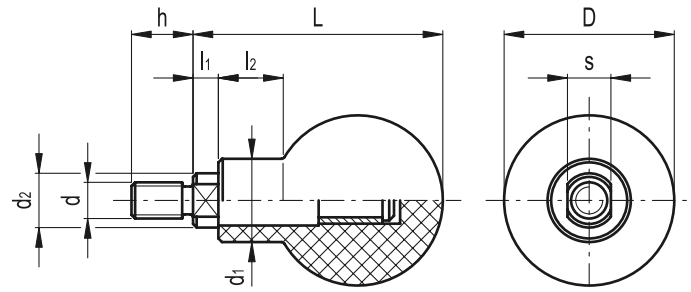
Standard Elements		Main dimensions				Mounting hole				Δ / ∇
Code	Description	D	L	d ₁	l ₂	d	l	l ₁	g	
45971	P.111/37-M8	37	47	18	13	M8	16	4	38	
45991	P.111/47-M10	47	62	23	17	M10	26	5	80	

P.111+x

Revolving handles



- **Material**
Phenolic based (PF) Duroplast. Resistant to solvents, oils, greases and other chemical agents.
- **Colour**
Black, glossy finish.
- **Assembly**
Zinc-plated steel threaded shank, two flat faces for fitting with 12 mm spanner.



Standard Elements		Main dimensions				Threaded shank					Δ / ∇	
Code	Description	D	L	d ₁	l ₂	d _{6g}	h	d ₂	l ₁	s	g	
45981	P.111/37+x-M8	37	54	18	13	M8	15	15	7	12	55	
46011	P.111/47+x-M10	47	69	23	17	M10	17	15	7	12	130	