

# I.281+x+Gh

## Revolving handles



- **Material**  
Phenolic based (PF) Duroplast. Resistant to solvents, oils, greases and other chemical agents.
- **Colour**  
Black, glossy finish.
- **Assembly**  
Matte chrome-plated steel shank, cylindrical head with hexagon socket.
- **Locking nut**  
Matte chrome-plated steel.

# I.481+x

## Revolving handles



- **Material**  
Phenolic based (PF) Duroplast. Resistant to solvents, oils, greases and other chemical agents.
- **Colour**  
Black, glossy finish.
- **Assembly**  
Black-oxide steel shoulder screw, cylindrical head with hexagon socket. A knurling acts as obstruction when the handle is fully screwed into its hole (the screw threaded end must be slightly chamfered).

### Applications

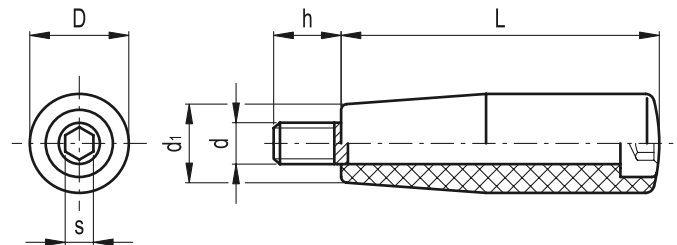
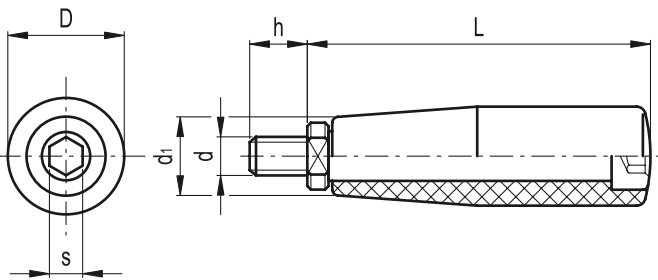
This handle is an economical solution for the most common applications.



5

394

Fixed, revolving, fold-away handles



Standard Elements		Main dimensions			Threaded shank			△
Code	Description	L	D	d <sub>1</sub>	d <sub>6g</sub>	h	s	g
22321	I.281/40+x-M6+Gh	45	18	15	M6	8	4	33
22421	I.281/50+x-M8+Gh	55	21	17	M8	10	5	56
22521	I.281/65+x-M8+Gh	70	23	19	M8	12	6	90
22522	I.281/65+x-M10+Gh	71	23	19	M10	12	6	98
22621	I.281/80+x-M10+Gh	86	26	21	M10	12	8	143
22721	I.281/90+x-M10+Gh	96	28	22	M10	12	8	180
22821	I.281/100+x-M12+Gh	109	31	25	M12	13	8	256
22822	I.281/100+x-M14+Gh	109	31	25	M14	13	8	262

Standard Elements		Main dimensions			Screw			△
Code	Description	L	D	d <sub>1</sub>	d <sub>6g</sub>	h	s	g
24551	I.481/40+x-M6	40	18	15	M6	13	5	25
24601	I.481/50+x-M6	50	21	17	M6	13	5	35
24651	I.481/65+x-M8	65	23	19	M8	15	6	62
24701	I.481/80+x-M8	80	26	21	M8	15	6	85