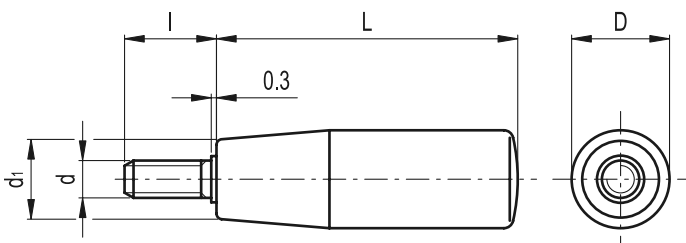


# I.280 p

## Handles



- **Material**  
Phenolic based (PF) Duroplast. Resistant to solvents, oils, greases and other chemical agents.
- **Colour**  
Black, glossy finish.
- **Assembly**  
Zinc-plated steel threaded stud, chamfered flat end according to UNI 947 : ISO 4753 (see Technical Data on page A11).



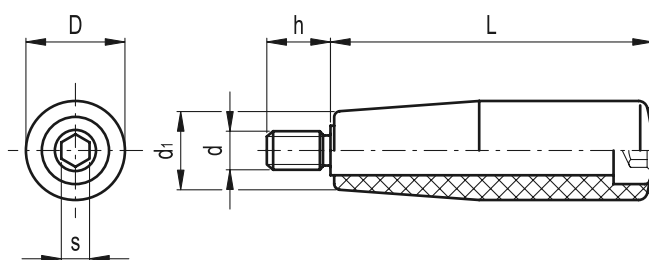
Standard Elements		Main dimensions			Threaded stud		⚖
Code	Description	L	D	d <sub>1</sub>	d <sub>6g</sub>	l	g
21611	I.280/40 p-M6x16	40	18	15	M6	16	18
21711	I.280/50 p-M8x16	50	21	17	M8	16	38
21712	I.280/50 p-M8x25	50	21	17	M8	25	40
21811	I.280/65 p-M10x16	65	23	19	M10	16	60
21812	I.280/65 p-M10x30	65	23	19	M10	30	67
21911	I.280/80 p-M10x16	80	26	21	M10	16	80
21912	I.280/80 p-M10x30	80	26	21	M10	30	87
22011	I.280/90 p-M12x16	90	28	22	M12	16	113
22012	I.280/90 p-M12x30	90	28	22	M12	30	122
22111	I.280/100 p-M12x16	102	31	25	M12	16	142
22112	I.280/100 p-M12x30	102	31	25	M12	30	150

# I.281+x

## Revolving handles



- **Material**  
Phenolic based (PF) Duroplast. Resistant to solvents, oils, greases and other chemical agents.
- **Colour**  
Black, glossy finish.
- **Assembly**  
Matte chrome-plated steel shank, cylindrical-head with hexagon socket.



Standard Elements		Main dimensions			Threaded shank			⚖
Code	Description	L	D	d <sub>1</sub>	d <sub>6g</sub>	h	s	g
22311	I.281/40+x-M6	40	18	15	M6	13	4	28
22411	I.281/50+x-M8	50	21	17	M8	15	5	52
22511	I.281/65+x-M8	65	23	19	M8	17	6	86
22512	I.281/65+x-M10	65	23	19	M10	17	6	90
22611	I.281/80+x-M10	80	26	21	M10	18	6	132
22711	I.281/90+x-M10	90	28	22	M10	18	8	170
22811	I.281/100+x-M12	102	31	25	M12	20	8	245
22812	I.281/100+x-M14	102	31	25	M14	20	8	248