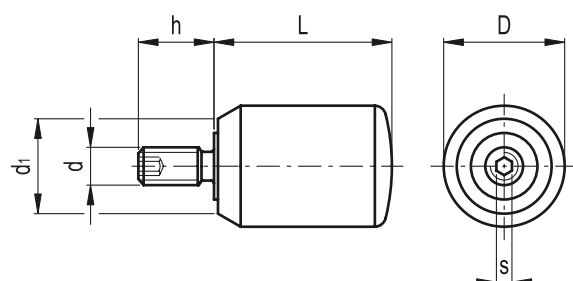


I.701+x

Revolving handles



- **Material**
Polyamide based (PA) technopolymer. Resistant to solvents, oils, greases and other chemical agents.
- **Colour**
Black, matte finish.
- **Assembly**
Zinc-plated steel shank, hexagon socket at threaded end.



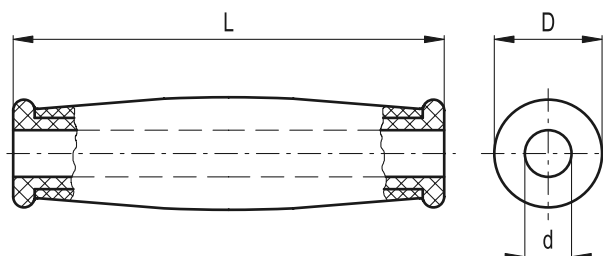
Standard Elements		Main dimensions			Threaded shank			△△
Code	Description	L	D	d1	d 6g	h	s	g
24979	I.701/20+x-M5	20	13.5	11	M5	10	2	10
24980	I.701/23+x-M5	23	16	12.5	M5	10	2	12

I.135

Revolving handles



- **Material**
Phenolic based (PF) Duroplast. Resistant to solvents, oils, greases and other chemical agents.
- **Colour**
Black, glossy finish.
- **Assembly**
Plain through hole with polyamide based (PA) technopolymer guide bosses in both ends.



Standard Elements		Main dimensions			△△
Code	Description	L	D	d	g
19001	I.135/120-10	120	30	10	77
19002	I.135/120-11	120	30	11	76
19003	I.135/120-13	120	30	13	74