

ELESA Original design

## Two-volume revolving handle



### • Material

High resilience polypropylene based (PP) technopolymer. Resistant to solvents, oils, greases and other chemical agents.

### • Colour

Black, matte finish.

### • Assembly

Zinc-plated steel shank, hexagon socket at threaded end.

### Ergonomy and design

The two-volume special design of this handle provides the operator's hand with a safe and ergonomic grip.



## Two-volume revolving handle



### • Material

High resilience polypropylene based (PP) technopolymer. Resistant to solvents, oils, greases and other chemical agents.

### • Colour

Black, matte finish.

### • Assembly

Zinc-plated steel shank, hexagon socket at threaded end.

### Ergonomy and design

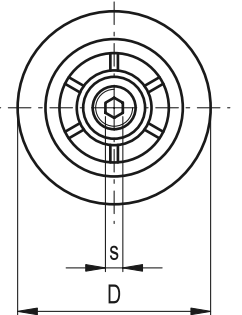
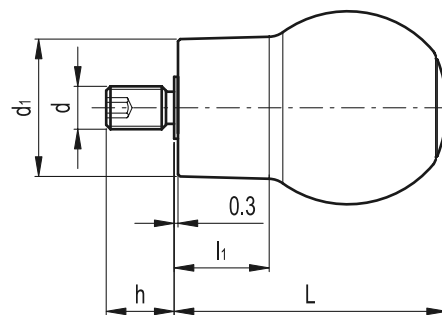
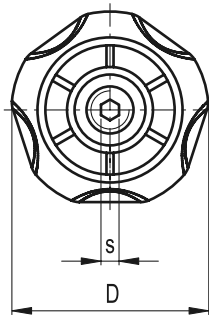
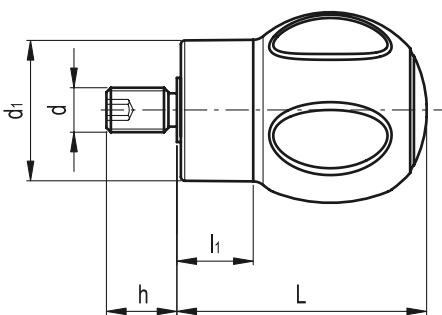
The two-volume special design of this handle provides the operator's hand with a safe and ergonomic grip.



5

376

Fixed, revolving, fold-away handles



Standard Elements		Main dimensions				Threaded shank			⚖
Code	Description	D	L	d1	l1	d 6g	h	s	g
245292	EBK.50+x-M10	50	62	36	19	M10	17	5	90

Standard Elements		Main dimensions				Threaded shank			⚖
Code	Description	D	L	d1	l1	d 6g	h	s	g
247011	EBS.45+x-M10	45	63	32	21.5	M10	17	5	89