

DIN 39

Fixed handles

• Material

- Execution **ST**: mirror-polished steel.
- Execution **KT**: polyamide based (PA) technopolymer, black colour, matte finish (only type E for D = 20, 25, 32) with black-oxide steel shank.

• Assembly

- Type **E**: pin with hexagon socket at threaded end.
- Type **D**: h8 tolerance plain pin (available only for execution ST).

DIN 98

Revolving handles

• Material

- Execution **AL**: fine turned aluminium.
- Execution **ST**: zinc-plated steel.
- Execution **KT**: polyamide based (PA) technopolymer, black colour, matte finish (only for D = 16, 20, 25, 32).

• Assembly

- Type **E**: zinc-plated steel shank, hexagon socket at threaded end.
- Type **D**: zinc-plated steel shank.

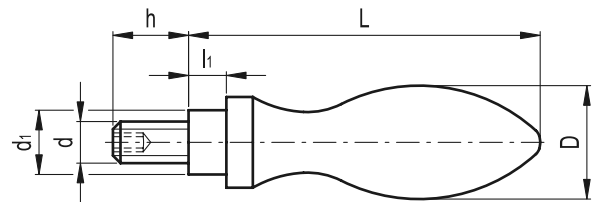
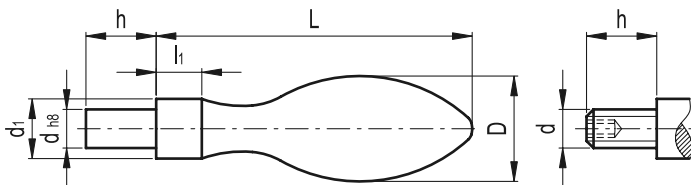
Special executions

h8 plain shank (type **D**).



DIN 39-D

DIN 39-E



5
400

Fixed, revolving, fold-away handles

Standard Elements	Main dimensions				Threaded pin			⚖
	D	L	d1 h13	l1	d	d h8	h	
DIN 39-ST-16-D	16	54	10	7	-	7	11	43
DIN 39-ST-16-E	16	54	10	7	M6	-	11	45
DIN 39-ST-20-D	20	64	13	8	-	8	13	92
DIN 39-ST-20-E	20	64	13	8	M8	-	13	91
DIN 39-ST-25-D	25	80	16	10	-	10	14	182
DIN 39-ST-25-E	25	80	16	10	M10	-	14	177
DIN 39-ST-32-D	32	100	20	13	-	13	21	368
DIN 39-ST-32-E	32	100	20	13	M12	-	21	360
DIN 39-ST-36-D	36	112	22	14	-	16	26	512
DIN 39-ST-36-E	36	112	22	14	M16	-	26	526
DIN 39-KT-20-E	20	64	13	8	M8	-	13	25
DIN 39-KT-25-E	25	80	16	10	M10	-	14	50
DIN 39-KT-32-E	32	100	20	13	M12	-	21	100

Standard Elements	Main dimensions				Threaded shank		⚖
	D	L	d1 h13	l1	d	h	
DIN 98-AL-16-E	16	54.5	10	5.5	M6	11	33
DIN 98-AL-20-E	20	67	13	6	M8	13	54
DIN 98-AL-25-E	25	83	16	8	M10	14	96
DIN 98-AL-32-E	32	105.5	20	10.5	M12	21	192
DIN 98-AL-36-E	36	117	22	11	M16	26	280
DIN 98-ST-16-E	16	54.5	10	5.5	M6	11	55
DIN 98-ST-20-E	20	67	13	6	M8	13	104
DIN 98-ST-25-E	25	83	16	8	M10	14	187
DIN 98-ST-32-E	32	105.5	20	10.5	M12	21	387
DIN 98-ST-36-E	36	117	22	11	M16	26	541
DIN 98-KT-16-E	16	54.5	10	5.5	M6	11	21
DIN 98-KT-20-E	20	67	13	6	M8	13	45
DIN 98-KT-25-E	25	83	16	8	M10	14	71
DIN 98-KT-32-E	32	105.5	20	10.5	M12	21	144