

I.622 N

ELESA Original design

Handles



• Material

High resilience polyamide based (PA) technopolymer. Resistant to solvents, oils, greases and other chemical agents.

• Colour

RAL 9005 black or RAL 3000 red, glossy finish.

• Assembly

Plain blind hole.

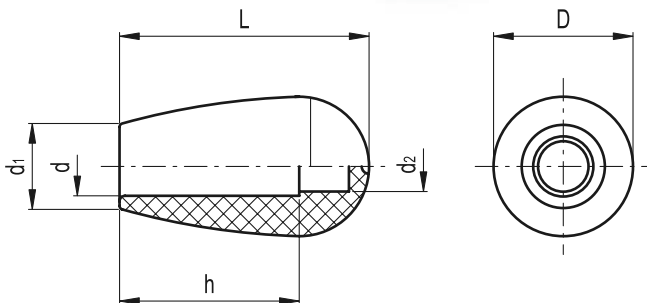
The elastic coupling by press-fit assembly on h9 tolerance drawn stock bars, is not affected by vibrations and prevents the handle from slipping off (see Technical Data on page A13).

Special executions on request (For sufficient quantities)

Different RAL colours.

Assembly instructions

Fit the handle onto slight chamfered shaft end and push as far as possible by hand or by means of a small press. Alternatively it is possible to tap the handle with a plastic or wooden mallet until firmly in place. In this case we strongly recommend to use a cloth or other suitable soft material over the product to avoid any surface damage.



RAL 9005 RAL 3000

Standard Elements		Main dimensions			Mounting hole			Δ
Code	Description	D	L	d ₁	d	h	d ₂	g
120941	I.622/25 N-6 nero	16	25	12	6	17	4	4
120946	I.622/25 N-6 rosso	16	25	12	6	17	4	4
120971	I.622/30 N-8 nero	20	32	14	8	21	6	7
120976	I.622/30 N-8 rosso	20	32	14	8	21	6	7
121021	I.622/40 N-8 nero	26	42	17	8	25	6	16
121026	I.622/40 N-8 rosso	26	42	17	8	25	6	16
121031	I.622/40 N-10 nero	26	42	17	10	30	7.5	14
121036	I.622/40 N-10 rosso	26	42	17	10	30	7.5	14
121091	I.622/55 N-10 nero	34	54.5	21	10	40	5.5	38
121096	I.622/55 N-10 rosso	34	54.5	21	10	40	5.5	38
121101	I.622/55 N-12 nero	34	54.5	21	12	40	5.5	36
121106	I.622/55 N-12 rosso	34	54.5	21	12	40	5.5	36

I.622 N-CLEAN



ELESA Original design

Handles



• Material

High resilience polyamide based (PA) technopolymer. Resistant to solvents, oils, greases and other chemical agents.

• Colour

White similar to RAL 9002, glossy finish.

• Assembly

Plain blind hole.

The elastic coupling by press-fit assembly on h9 tolerance drawn stock bars, is not affected by vibrations and prevents the handle from slipping off (see Technical Data on page A13).

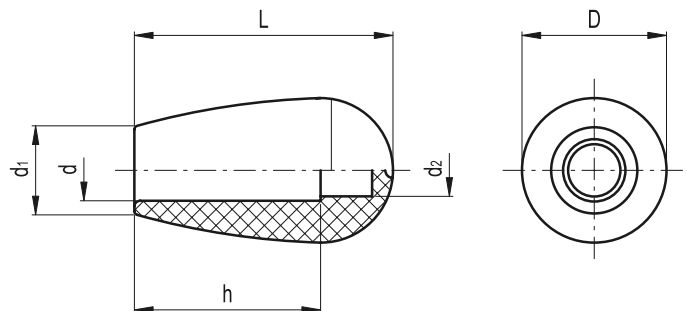
Features and applications

This handle, thanks to its white colour and glossy finish, is particularly suitable for applications on medical and hospital equipment and on food processing machines whose parts, for hygienic reasons, must be frequently cleaned.

Its solid shape without cavities prevents unhealthy residues from depositing.

Assembly instructions

Fit the handle onto slight chamfered shaft end and push as far as possible by hand or by means of a small press. Alternatively it is possible to tap the handle with a plastic or wooden mallet until firmly in place. In this case we strongly recommend to use a cloth or other suitable soft material over the product to avoid any surface damage.



Standard Elements		Main dimensions			Mounting hole			Δ
Code	Description	D	L	d ₁	d	h	d ₂	g
151202	I.622/25 N-6 CLEAN	16	25	12	6	17	4	4
151212	I.622/30 N-8 CLEAN	20	32	14	8	21	6	7
151222	I.622/40 N-10 CLEAN	26	42	17	10	30	7.5	14
151232	I.622/55 N-10 CLEAN	34	54.5	21	10	40	5.5	38
151242	I.622/55 N-12 CLEAN	34	54.5	21	12	40	5.5	36

5

360

Fixed, revolving, fold-away handles



ELESA and GANTER models all rights reserved in accordance with the law. Always mention the source when reproducing our drawings.