

I.222

ELESA Original design

Handles



Material

Phenolic based (PF) Duroplast. Resistant to solvents, oils, greases and other chemical agents.

Colour

Black, glossy finish.

Assembly

Tapped blind hole.

Alternative products

I.622 (see page 359) handles, with higher performances and cheaper price are available for dimensions smaller or equal to 55 mm.

Dimensions 70 and 90 mm, are only available in this series (I.222), due to technical reasons.



I.222 N

ELESA Original design

Handles



Material

Phenolic based (PF) Duroplast. Resistant to solvents, oils, greases and other chemical agents.

Colour

Black, glossy finish.

Assembly

Glass-fibre reinforced polyamide based (PA) technopolymer selflocking boss, plain blind hole.

The elastic coupling by press-fit assembly on h9 tolerance drawn stock bars, is not affected by vibrations and prevents the handle from slipping off (see Technical Data on page A13).

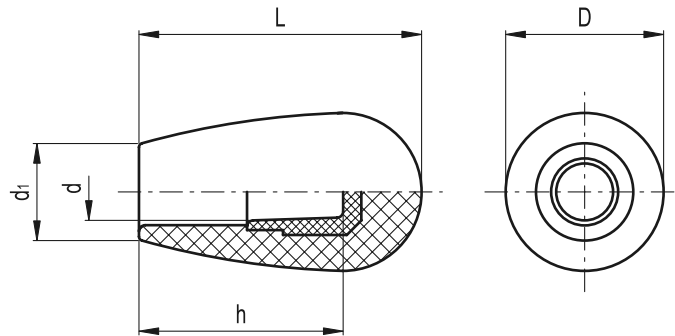
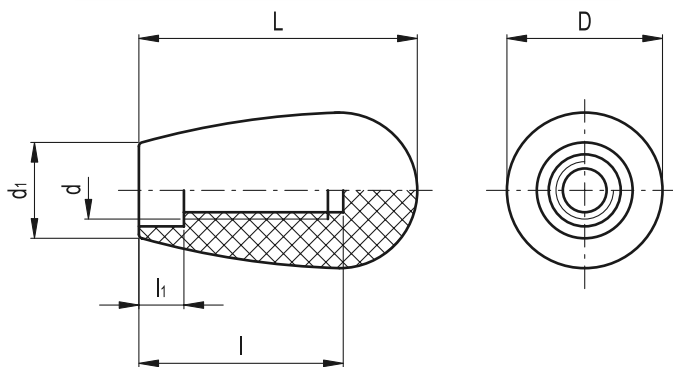
Assembly instructions

Fit the handle onto slight chamfered shaft end and push as far as possible by hand or by means of a small press. Alternatively it is possible to tap the handle with a plastic or wooden mallet until firmly in place. In this case we strongly recommend to use a cloth or other suitable soft material over the product to avoid any surface damage.

Alternative products

I.622 (see page 359) handles, with higher performances and cheaper price are available for dimensions smaller or equal to 55 mm.

Dimensions 70 and 90 mm, are only available in this series (I.222), due to technical reasons.



Standard Elements		Main dimensions			Mounting hole			Δ
Code	Description	L	D	d ₁	d	l	h ₁	g
20901	I.222/25-M6	25	15	12	M6	16	3.5	5
21001	I.222/30-M8	31	20	14	M8	20	3.5	9
21101	I.222/40-M8	42	26	17	M8	20	5	22
21102	I.222/40-M10	42	26	17	M10	30	5	20
21201	I.222/55-M10	54	33	20	M10	35	8	42
21202	I.222/55-M12	54	33	20	M12	35	8	40
21301	I.222/70-M12	68	38	23	M12	45	11	73
21401	I.222/90-M14	87	41	25	M14	55	14	111
21402	I.222/90-M16	87	41	25	M16	55	14	109

Standard Elements		Main dimensions			Mounting hole			Δ
Code	Description	L	D	d ₁	d	h	g	
20911	I.222/25 N-6	25	15	12	6	17	5	
21011	I.222/30 N-8	31	20	14	8	21	9	
21111	I.222/40 N-10	42	26	17	10	30	18	
21211	I.222/55 N-10	54	33	20	10	37	42	
21212	I.222/55 N-12	54	33	20	12	40	40	
21311	I.222/70 N-14	68	38	23	14	50	68	
21411	I.222/90 N-16	87	41	25	16	58	106	