

I.149

ELESA Original design

Handles



- **Material**
Phenolic based (PF) Duroplast. Resistant to solvents, oils, greases and other chemical agents.
- **Colour**
Black, glossy finish.
- **Assembly**
Tapped blind hole.

I.580 N

Handles



- **Material**
High resilience polypropylene based (PP) technopolymer. Resistant to solvents, oils, greases and other chemical agents.
- **Colour**
Black, matte finish.
- **Assembly**
Blind hole.
The elastic coupling by press-fit assembly on h9 tolerance drawn stock bars, is not affected by vibrations and prevents the handle from slipping off (see Technical Data on page A13).

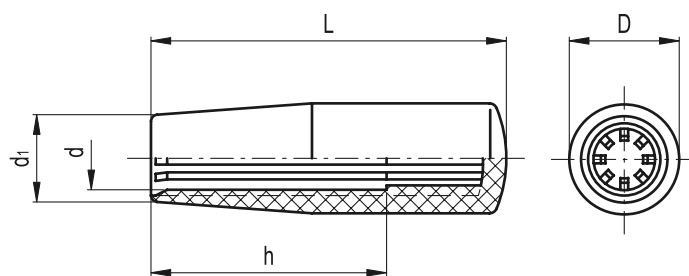
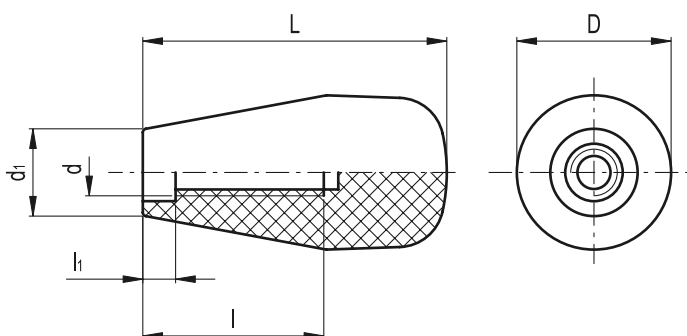
Assembly instructions

Fit the handle onto slight chamfered shaft end and push as far as possible by hand or by means of a small press. Alternatively it is possible to tap the handle with a plastic or wooden mallet until firmly in place. In this case we strongly recommend to use a cloth or other suitable soft material over the product to avoid any surface damage.



5
388

Fixed, revolving, fold-away handles



Standard Elements		Main dimensions			Mounting hole			△△
Code	Description	L	D	d ₁	d	l	h ₁	g
120035	I.149/65-M10	67	34	19	M10	40	8	56
120055	I.149/85-M10	86	34	20	M10	48	7	72

Standard Elements		Main dimensions			Mounting hole			△△
Code	Description	L	D	d ₁	d	h	g	
24821	I.580/40 N-8	40	18	15	8	28	8	
24831	I.580/50 N-10	50	21	17	10	35	10	
24846	I.580/65 N-10	65	23	19	10	45	17	
24848	I.580/65 N-12*	65	23	19	12*	45	16	
24861	I.580/80 N-12	80	26	21	12	50	25	
24863	I.580/80 N-14*	80	26	21	14*	50	24	
24875	I.580/90 N-15	90	28	22	15	60	33	
24876	I.580/90 N-16*	90	28	22	16*	60	32	

* The assembly holes marked with * are cylindrical holes without fins.