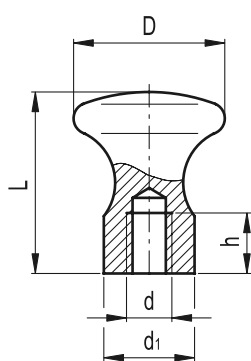


GN 75

Waist shaped handles

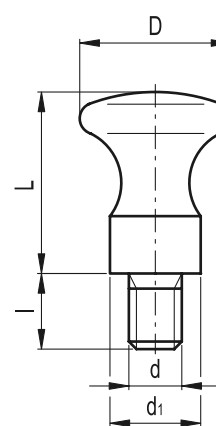
- **Material**
Black-oxide turned and polished steel.
- **Assembly**
Tapped hole.



GN 75-E

Waist shaped handles

- **Material**
Black-oxide turned and polished steel.
- **Assembly**
Threaded stud.



Standard Elements	Main dimensions			Mounting hole		△△ g
	D	L	d ₁	d	h	
GN 75-16-M5-D	16	18	10	M5	7	10
GN 75-20-M6-D	20	24	12	M6	9	21
GN 75-25-M6-D	25	29	14	M6	9	41
GN 75-32-M8-D	32	37	18	M8	12	88
GN 75-36-M10-D	36	42	20	M10	15	110

Standard Elements	Main dimensions			Threaded stud		△△ g
	D	L	d ₁	d	l	
GN 75-16-M6-E	16	18	10	M6	10	14
GN 75-20-M8-E	20	24	12	M8	12	28
GN 75-25-M8-E	25	29	14	M8	14	46
GN 75-32-M10-E	32	37	18	M10	16	87
GN 75-36-M12-E	36	42	20	M12	18	138