



## Lever arms

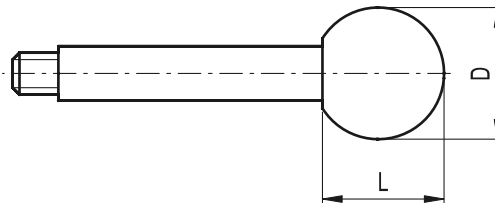


- **Arm**  
AISI 303 stainless steel.
- **Fixed handle**  
Black Duroplast available in two different shapes:
  - execution **A**: ball knob.
  - execution **E**: cylindrical knob.

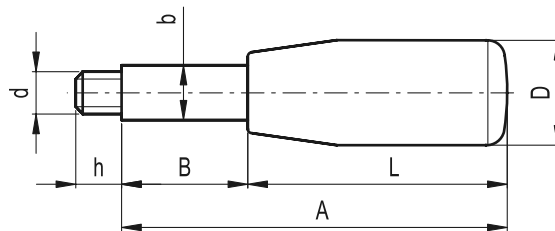
### Features and applications

AISI 303 stainless steel, thanks to its high resistance to corrosion, allows the application of these lever arms on machines and equipment in those sectors where laws or particular hygienic, climatic and environmental factors make it mandatory to use corrosion resistant materials.

GN 310-A



GN 310-E



Standard Elements	Main dimensions								△△
Description	A	D	L	B	b	d	h	g	
GN 310-8-63-A-NI	63	20	18	45	8	M6	9	30	
GN 310-8-63-E-NI	63	18	40	23	8	M6	9	27	
GN 310-8-80-A-NI	80	20	18	62	8	M6	9	36	
GN 310-8-80-E-NI	80	18	40	40	8	M6	9	33	
GN 310-8-100-A-NI	100	20	18	82	8	M6	9	44	
GN 310-8-100-E-NI	100	18	40	60	8	M6	9	41	
GN 310-10-80-A-NI	80	25	22.5	57.5	10	M8	11	55	
GN 310-10-80-E-NI	80	21	50	30	10	M8	11	50	
GN 310-10-100-A-NI	100	25	22.5	77.5	10	M8	11	63	
GN 310-10-100-E-NI	100	21	50	50	10	M8	11	62	
GN 310-10-125-A-NI	125	25	22.5	102.5	10	M8	11	78	
GN 310-10-125-E-NI	125	21	50	75	10	M8	11	78	
GN 310-12-100-A-NI	100	32	29	71	12	M10	14	103	
GN 310-12-100-E-NI	100	23	65	35	12	M10	14	81	
GN 310-12-125-A-NI	125	32	29	96	12	M10	14	123	
GN 310-12-125-E-NI	125	23	65	60	12	M10	14	103	
GN 310-12-160-A-NI	160	32	29	131	12	M10	14	154	
GN 310-12-160-E-NI	160	23	65	95	12	M10	14	133	
GN 310-14-125-A-NI	125	35	32.5	92.5	14	M12	16	159	
GN 310-14-125-E-NI	125	26	80	45	14	M12	16	125	
GN 310-14-160-A-NI	160	35	32.5	127.5	14	M12	16	202	
GN 310-14-160-E-NI	125	26	80	80	14	M12	16	168	
GN 310-14-200-A-NI	200	35	32.5	167.5	14	M12	16	250	
GN 310-14-200-E-NI	200	26	80	120	14	M12	16	216	