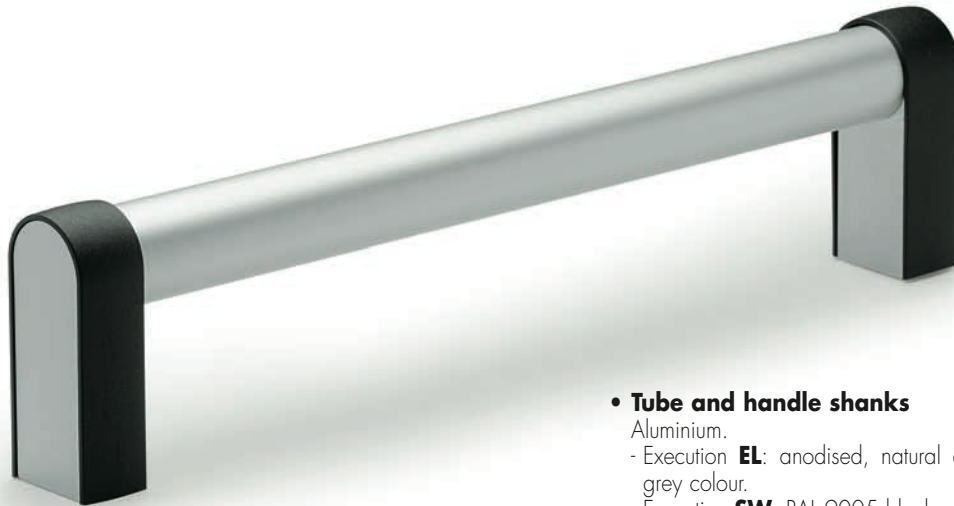


GN 669

Tubular handles



• Tube and handle shanks

Aluminium.

- Execution **EL**: anodised, natural colour, matte finish, handle shanks in grey colour.
- Execution **SW**: RAL 9005 black colour, matte finish, epoxy resin coating, handle shanks in black colour.

• Handle shank covers

Polyamide based (PA) technopolymer, black colour, matte finish. Resistant to solvents, oils, greases and other chemical agents.

• Assembly

- Execution **A**: back mounting by means of two M8 screws, tapped blind holes.
- Execution **B**: front mounting by means of DIN 912-M8x75 zinc-plated steel socket head screws, ISO 4032 zinc-plated steel hexagon nuts and DIN 125 zinc-plated steel washers.

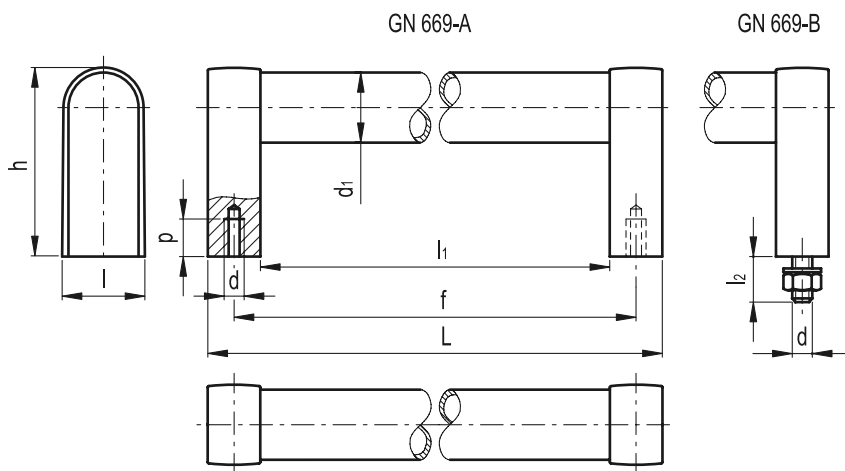
Special executions on request

(For sufficient quantities)

- Handle shanks with zinc-plated threaded pin, lock nuts and washers for front mounting (execution B).
- Handle shanks with bores for the connection to other tubes, even to curved tubes.
- Tubes, handle shanks, handle shanks covers in different colours.
- Different lengths.

Applications

GN 669 tubular handles are particularly suitable for handrail functions.



Standard Elements	Main dimensions						Mounting holes			⚖
	Description	L	f	h	l	l ₁	d ₁	d	p	
GN 669-28-200-A-*	220	200	76	32	180	28	M8	15	-	180
GN 669-28-200-B-*	220	200	76	32	180	28	M8	-	20	210
GN 669-28-250-A-*	270	250	76	32	230	28	M8	15	-	210
GN 669-28-250-B-*	270	250	76	32	230	28	M8	-	20	240
GN 669-28-300-A-*	320	300	76	32	280	28	M8	15	-	220
GN 669-28-300-B-*	320	300	76	32	280	28	M8	-	20	250
GN 669-28-400-A-*	420	400	76	32	380	28	M8	15	-	270
GN 669-28-400-B-*	420	400	76	32	380	28	M8	-	20	300
GN 669-28-500-A-*	520	500	76	32	480	28	M8	15	-	290
GN 669-28-500-B-*	520	500	76	32	480	28	M8	-	20	325
GN 669-28-600-A-*	620	600	76	32	580	28	M8	15	-	340
GN 669-28-600-B-*	620	600	76	32	580	28	M8	-	20	370

* Complete the description of the standard item needed by adding the index of the material of the handle: EL (natural anodised aluminium), SW (black epoxy resin).