

Tubular handles

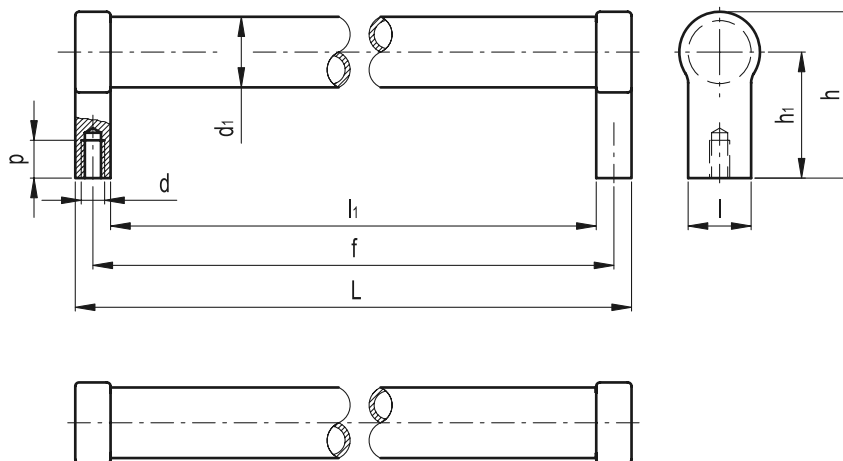


- **Tube**
AISI 304 stainless steel, thickness 2 mm, fine grounded matte finish.
- **Handle shanks**
Stainless steel (precision casting), matt sand-blasted and electropolished finish. Fitted to the tube by means of an O-ring.
- **Assembly**
Tapped blind holes.

Special executions on request (For sufficient quantities)
Different lengths.

Features and applications

An O-ring at the connecting point between the tubular handle and the shanks, prevents any spray water from entering the tube. These handles are typically used on turning or rolling doors for machines and equipment.
Stainless steel, thanks to its high resistance to corrosion, allows the application of these handles on machines and equipment in those sectors where laws or particular hygienic, climatic and environmental factors make it mandatory to use corrosion resistant materials.



Standard Elements	Main dimensions						Mounting holes		△	
Description	L	f ±1	h	h ₁	l	h ₁	d ₁	d	p min.	g
GN 333.5-28-200	214	200	66	50	25	186	28	M8	15	500
GN 333.5-28-250	264	250	66	50	25	236	28	M8	15	563
GN 333.5-28-300	314	300	66	50	25	286	28	M8	15	626
GN 333.5-28-400	414	400	66	50	25	386	28	M8	15	760
GN 333.5-28-500	514	500	66	50	25	486	28	M8	15	790
GN 333.5-28-600	614	600	66	50	25	586	28	M8	15	980