

# M.990

## Guard safety handles



- Material**  
 Polyamide based (PA) technopolymer. Resistant to solvents, oils, greases and other chemical agents.
- Colour**  
 Black, matte finish.
- Screw cover**  
 Technopolymer in standard colours: RAL 9005 black, RAL 2004 orange, RAL 7035 grey, RAL 1021 yellow, RAL 5024 light-blue, RAL 3000 red, matte finish, snap-in assembly, removable.
- Assembly**  
 Through holes for cylindrical-head screws with hexagon socket, hexagonal-head screws or standard lock nuts.



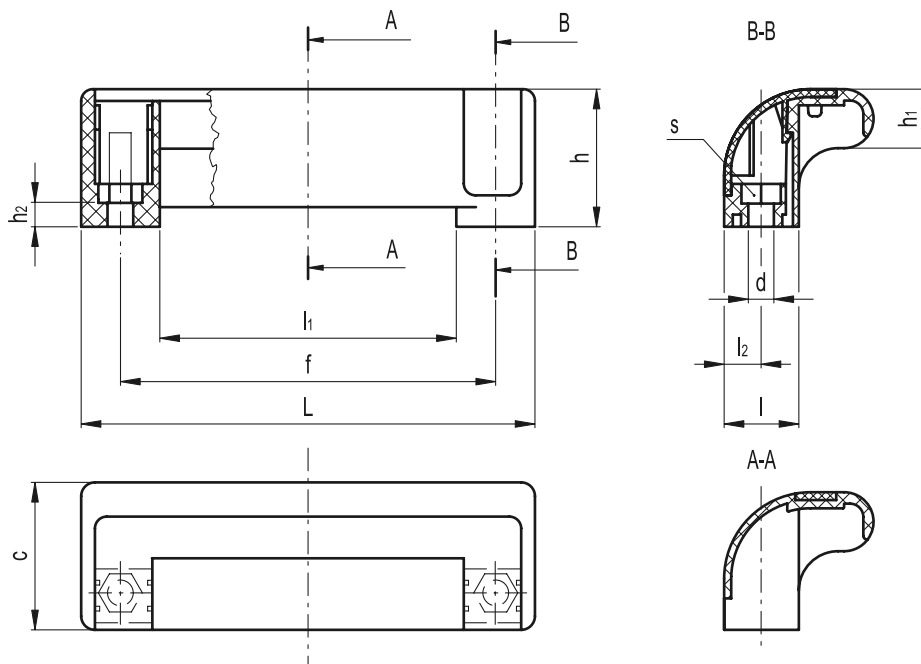
### Features and applications

M.990 handles have been especially designed to fit machines guards or automation systems with double-leaf door. The special closed design of the handle represents a safety element for the operator's fingers. Moreover, the coloured cover improves the visibility of the handle and offers the possibility of product customisation.

4

330

U-handles



**C2** RAL 2004 **C3** RAL 7035 **C4** RAL 1021 **C5** RAL 5024 **C6** RAL 3000 **C9** RAL 9005



| Standard Elements |                   | Main dimensions |       |    |      |    |      |     |    | Mounting holes |    |    | △△ |
|-------------------|-------------------|-----------------|-------|----|------|----|------|-----|----|----------------|----|----|----|
| Code              | Description       | L               | f±0.5 | h  | c    | l  | l1   | l2  | h1 | d              | h2 | s  | g  |
| 138511            | M.990/115 EH-6-C9 | 115             | 95.5  | 35 | 37.5 | 19 | 75.5 | 9.5 | 15 | 6.5            | 6  | 10 | 33 |
| 138512            | M.990/115 EH-6-C2 | 115             | 95.5  | 35 | 37.5 | 19 | 75.5 | 9.5 | 15 | 6.5            | 6  | 10 | 33 |
| 138513            | M.990/115 EH-6-C3 | 115             | 95.5  | 35 | 37.5 | 19 | 75.5 | 9.5 | 15 | 6.5            | 6  | 10 | 33 |
| 138514            | M.990/115 EH-6-C4 | 115             | 95.5  | 35 | 37.5 | 19 | 75.5 | 9.5 | 15 | 6.5            | 6  | 10 | 33 |
| 138515            | M.990/115 EH-6-C5 | 115             | 95.5  | 35 | 37.5 | 19 | 75.5 | 9.5 | 15 | 6.5            | 6  | 10 | 33 |
| 138516            | M.990/115 EH-6-C6 | 115             | 95.5  | 35 | 37.5 | 19 | 75.5 | 9.5 | 15 | 6.5            | 6  | 10 | 33 |



**elessa-GANTER**

ELESA and GANTER models all rights reserved in accordance with the law. Always mention the source when reproducing our drawings.