

Guard safety handles



- **Material**
Glass-fibre reinforced polyamide based (PA) technopolymer. Resistant to solvents, oils, greases and other chemical agents.
- **Colour**
Grey-black, matte finish.
- **Cover**
Technopolymer in Ergostyle colours, glossy finish, supplied not assembled, snap-in assembly, removable by a screwdriver.
Available also as accessory sold separately (see caps table).

Code	Description
29864-*	ECO.S4-*

* Complete the code and the description by adding the index of the colour (C1,.....,C6).

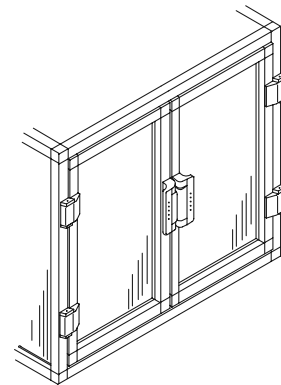
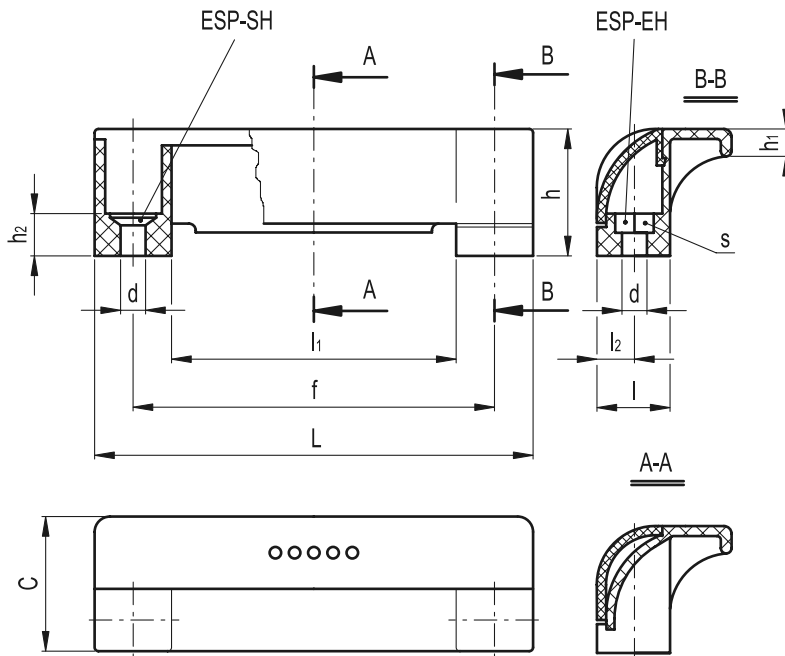
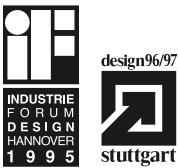
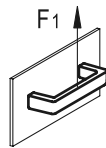
- **Assembly**
 - Execution **EH**: through holes for cylindrical-head screws with hexagon socket, hexagonal-head screws or standard lock nuts.
 - Execution **SH**: through holes for countersunk head screws.

Features and applications

ESP. handles have been especially designed to fit machines guards or automation systems with double-leaf door. The special closed design of the handle represents a safety element for the operator's fingers. Moreover, the coloured cover improves the visibility of the handle and offers the possibility of product customisation.

Technical data

Tensile stress: F1 value reported in the table is the result of breaking tests carried out with an appropriate dynamometric equipment under the test conditions shown in the figure with ambient temperature.



C1 RAL 7021 **C2** RAL 2004 **C3** RAL 7035 **C4** RAL 1021 **C5** RAL 5024 **C6** RAL 3000



Standard Elements		Main dimensions								Mounting holes			F1	△
Code	Description	L	f	h	C	l	l ₁	l ₂	h ₁	d	h ₂	s	[N]	g
265111-*	ESP.110-EH-*	114	93.5±0.5	33	35	19	74	9.5	7	6.5	11	10	90	33
265151-*	ESP.110-SH-*	114	93.5±0.5	33	35	19	74	9.5	7	6.5	11	-	90	33

* Complete the code and the description of the standard item needed by adding the index of the colour of the cover (C1,.....,C6) ex: 265111-C2 ESP.110-EH-C2