

# M.443 AE-V0



ELESA Original design

## Handles (front mounting)



### • Material

Glass-fibre reinforced polyamide based (PA) technopolymer certified self-extinguish **UL-94 V0**. Resistant to solvents, oils, greases and other chemical agents.

### • Colour

Black, matte finish.

### • Assembly

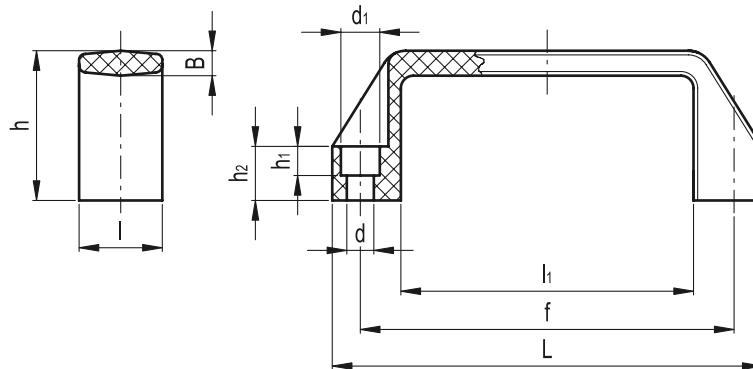
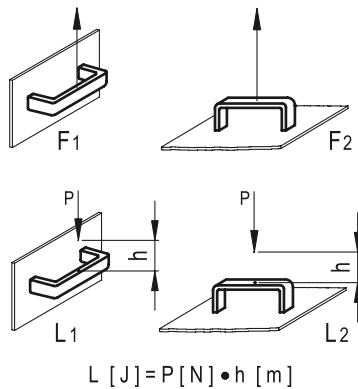
Through holes for cylindrical-head screws with hexagon socket.



### Technical data

In long-term thermal ageing tests, with a maximum decrease in critical mechanical properties by 50%, the relative temperature index UL 746 B (RTI) was equal to 65.

**The "V0" certification in compliance with UL-94 V (Underwriters Laboratories)** (see page A5) indicates that on a plastic test sample with specific shape and dimensions, in the vertical position, the flame is extinguished within 10 seconds, without generating any incandescent drops. Tensile stress and impact strength: F1, F2, L1 and L2 values reported in the table are the result of breaking tests carried out with the appropriate dynamometric equipment under the test conditions shown in the figure with ambient temperature.



Standard Elements		Main dimensions						Mounting holes				F1	F2	L1	L2	$\Delta \Delta$
Code	Description	L	f	h	B	l	l <sub>1</sub>	d	d <sub>1</sub>	h <sub>1</sub>	h <sub>2</sub>	[N]	[N]	[J]	[J]	g
150001	M.443/110 AE-V0	109	93.5±0.5	38	6	21	74	6.5	10.5	7	13	1750	1700	9	5	28
150011	M.443/140 AE-V0	137	117±0.5	41	7	26	93	8.5	13.5	8.5	15	3500	2200	10	8	50
150021	M.443/150 AE-V0	150	132±1	45	7	27	108	8.5	13.5	8.5	16	3000	1800	12	8	55
150031	M.443/200 AE-V0	196	179±1	50	7.5	28	151	8.5	13.5	8.5	17	1400	2100	20	13	80



**eleSA-GANTER**

ELESA and GANTER models all rights reserved in accordance with the law. Always mention the source when reproducing our drawings.