

Handles

- **Material**

Stainless steel (precision casting), sand-blasted matte finish.

- **Assembly**

- Execution **A**: back mounting, tapped blind holes.
- Execution **B**: front mounting, through holes for cylindrical-head screws with hexagon socket, DIN 912.

Features and applications

The assembly hole centres of executions A and B are equal. Therefore, they can be assembled in pairs opposed to each other (Fig. 1).

Stainless steel, thanks to its high resistance to corrosion, allows the application of these handles on machines and equipment in those sectors where laws or particular hygienic, climatic and environmental factors make it mandatory to use corrosion resistant materials.

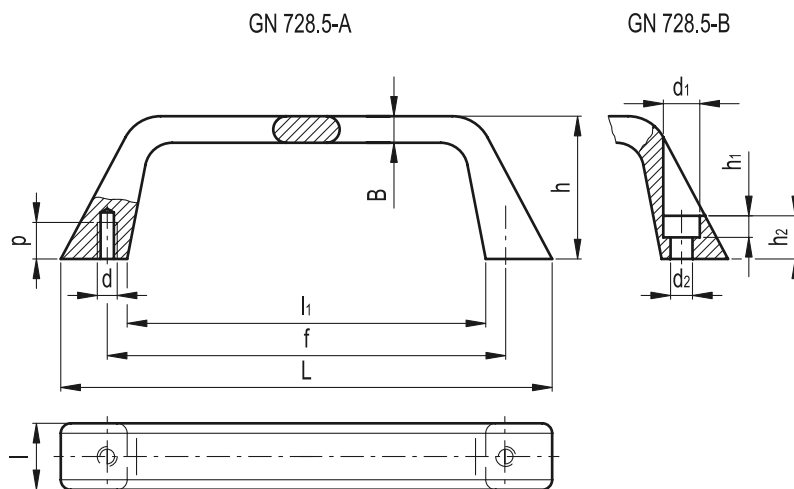


Fig.1

4

304

U-handles



Standard Elements	Main dimensions						Mounting holes					Δ/Δ	
Description	L	f	h	B	l	l ₁	d	d ₁	d ₂	h ₁	h ₂	p	g
GN 728.5-120-A	147	120	42.5	8	22.5	108	M6	-	-	-	-	10	263
GN 728.5-120-B	147	120	42.5	8	22.5	108	-	11	6.4	6.6	13	-	234