

GN 668

Handles

• Material

Aluminium. Oval flat cross section bar.

- Execution **BL**: natural aluminium.

- Execution **SW**: RAL 9005 black colour, matte finish, epoxy resin coating.

• Assembly

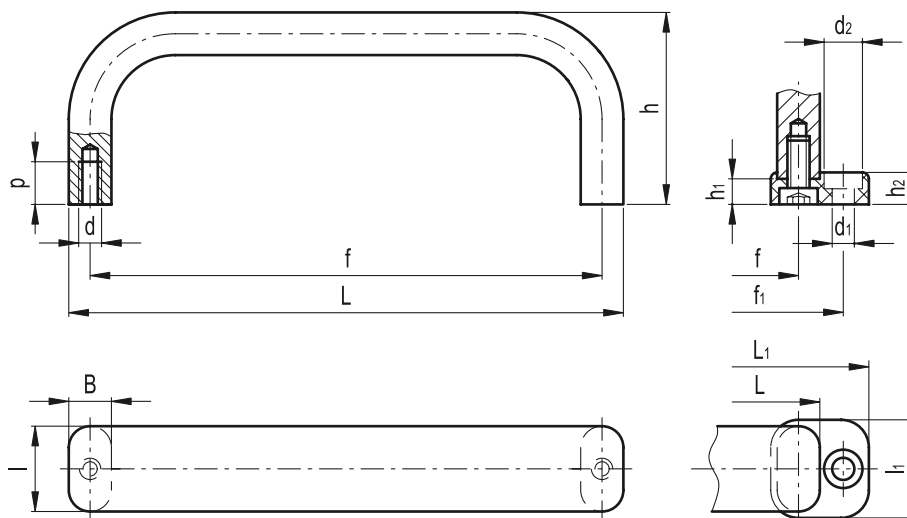
- Execution **A**: back mounting, tapped blind holes.

- Execution **B**: front mounting by means of two polyamide based (PA) technopolymer adapters, black colour, matte finish and two M5 screws.



GN 668-A

GN 668-B



Standard Elements	Main dimensions									Mounting holes					Δ/Δ
Description	L	L ₁	f	f ₁	h	h ₁	B	l	l ₁	d	p	d ₁	d ₂	h ₂	g
GN 668-20-130-A-BL	130	-	120	-	45	-	10	20	-	M5	10	-	-	-	85
GN 668-20-130-A-SW	130	-	120	-	45	-	10	20	-	M5	10	-	-	-	85
GN 668-20-130-B-BL	130	153	120	141	45	6	10	20	23	-	-	5.2	9	7.5	100
GN 668-20-130-B-SW	130	153	120	141	45	6	10	20	23	-	-	5.2	9	7.5	100
GN 668-20-170-A-BL	170	-	160	-	45	-	10	20	-	M5	10	-	-	-	105
GN 668-20-170-A-SW	170	-	160	-	45	-	10	20	-	M5	10	-	-	-	105
GN 668-20-170-B-BL	170	193	160	181	45	6	10	20	23	-	-	5.2	9	7.5	115
GN 668-20-170-B-SW	170	193	160	181	45	6	10	20	23	-	-	5.2	9	7.5	115
GN 668-20-190-A-BL	190	-	180	-	45	-	10	20	-	M5	10	-	-	-	115
GN 668-20-190-A-SW	190	-	180	-	45	-	10	20	-	M5	10	-	-	-	115
GN 668-20-190-B-BL	190	213	180	201	45	6	10	20	23	-	-	5.2	9	7.5	125
GN 668-20-190-B-SW	190	213	180	201	45	6	10	20	23	-	-	5.2	9	7.5	125
GN 668-20-210-A-BL	210	-	200	-	45	-	10	20	-	M5	10	-	-	-	125
GN 668-20-210-A-SW	210	-	200	-	45	-	10	20	-	M5	10	-	-	-	125
GN 668-20-210-B-BL	210	233	200	221	45	6	10	20	23	-	-	5.2	9	7.5	136
GN 668-20-210-B-SW	210	233	200	221	45	6	10	20	23	-	-	5.2	9	7.5	136



elessa+GANTER

ELESA and GANTER models all rights reserved in accordance with the law. Always mention the source when reproducing our drawings.