

Handles

- **Material**

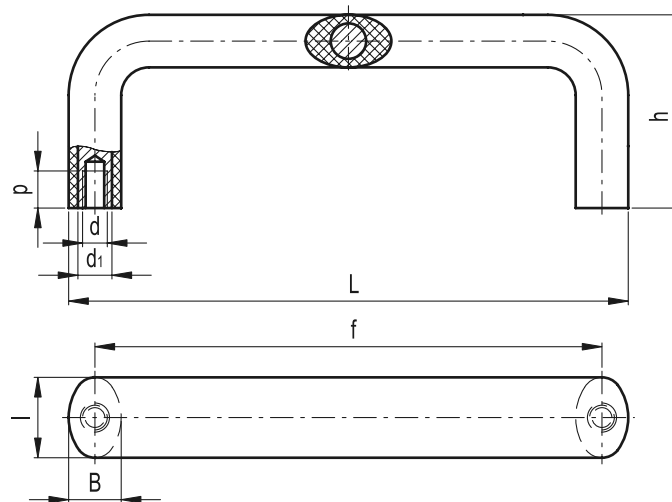
Polyurethane foam rubber, black colour with steel reinforcement. Soft matte finish surface highly resistant to abrasion.

- **Assembly**

Back mounting by means of two M6 screws.

Features and applications

The steel reinforcement and polyurethane foam rubber coating of GN 564 handle, guarantee high resistance to damages and shock absorption preventing the operator from any injuries during operations.



Standard Elements	Main dimensions					Mounting holes		⚖	
	L	f	h	B	l	d	p		g
GN 564-25-112	128	112	50	16	25	10	M6	10	136
GN 564-25-128	144	128	54	16	25	10	M6	10	151
GN 564-25-160	176	160	54	16	25	10	M6	10	174