

GN 225

Cabinet "U" handles

• Material

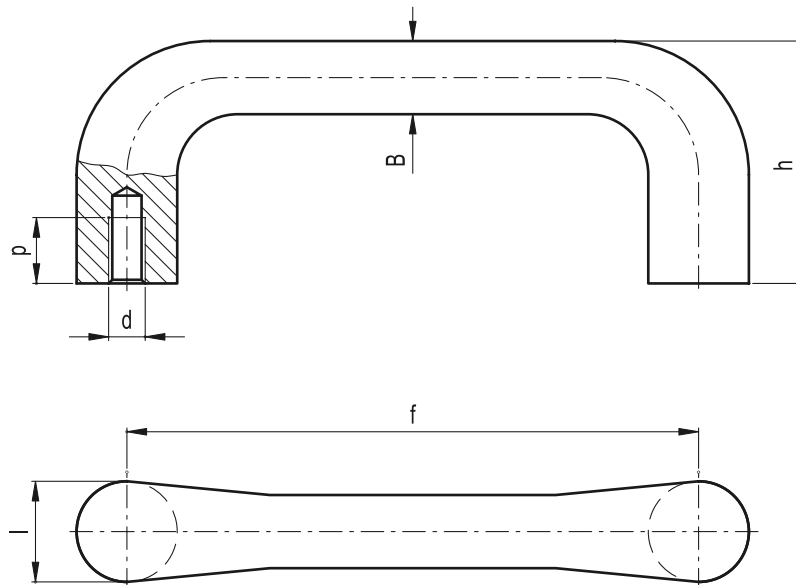
Cast iron GGG.

- Execution **BL**: blank unfinished casting, fettled.

- Execution **SW**: RAL 9005 black colour, textured finish, epoxy resin coating.

Features

Cabinet "U" handles GN 225 are simple, very rugged handles, used for heavy duty applications.



Standard Elements	Main dimensions				Mounting holes		△△
Description	l	f ±0.5	h	B	d	p	g
GN 225-18-BL	18	100	42	12	M6	12	196
GN 225-18-SW	18	100	42	12	M6	12	196
GN 225-20-BL	20	112	47	14	M8	15	260
GN 225-20-SW	20	112	47	14	M8	15	260
GN 225-22-BL	22	125	53	16	M10	18	347
GN 225-22-SW	22	125	53	16	M10	18	347
GN 225-25-BL	25	140	59	18	M12	20	513
GN 225-25-SW	25	140	59	18	M12	20	513



elessa+GANTER

ELESA and GANTER models all rights reserved in accordance with the law. Always mention the source when reproducing our drawings.