

GN 212.3

Adjustable tension handles

- **Lever body**

Black-oxide turned steel.

- **Handle**

Black-oxide turned steel arm with DIN 319 (see page 362) black phenolic based (PF) Duroplast ball knob.

- Execution **D**: with straight arm.

- Execution **E**: with inclined arm by a 20° angle.

- **Clamping element**

Black-oxide steel threaded stud with toothed element for coupling to the lever body, steel return spring.

Instructions of use

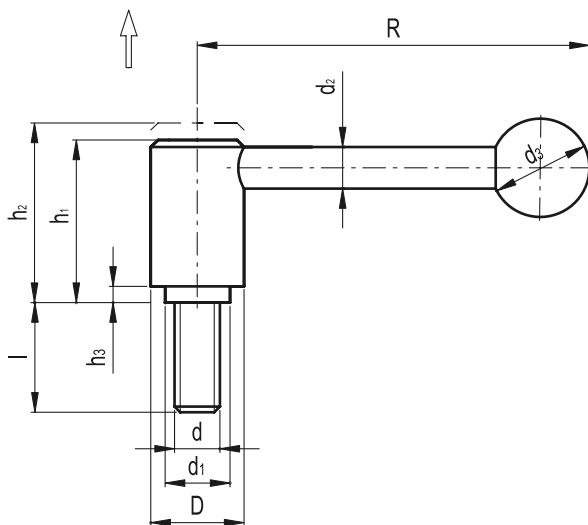
The threaded stud is connected to the handle via serrations and can be easily disengaged. By pulling the handle, the internal mechanism disengages the serrations and allows the handle to swivel to the ideal clamping position. By releasing the handle, the mechanism automatically re-engages serrations.

Features and applications

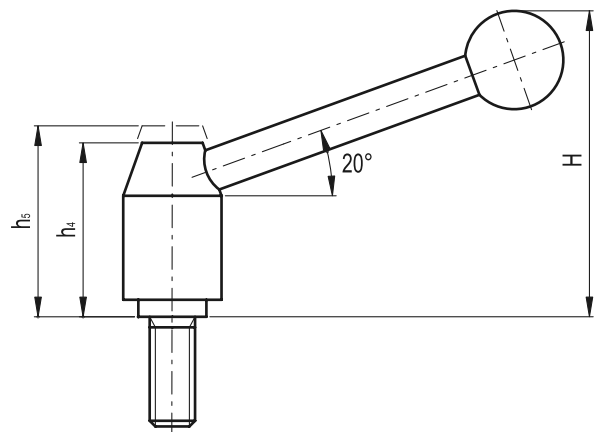
GN 212.3 adjustable handles are used for applications having a limited space or where a particular handle position is required.



GN 212.3-D



GN 212.3-E



Standard Elements	Main dimensions											Threaded stud		⚠
Description	D	R	H~	h1	h2	h3	h4	h5	d1	d2	d3	d	l	g
GN 212.3-21-M8-12-*	21	75	59	31	35	1	33.5	37.5	13.5	8	20	M8	12	103
GN 212.3-21-M8-16-*	21	75	59	31	35	1	33.5	37.5	13.5	8	20	M8	16	104
GN 212.3-21-M8-20-*	21	75	59	31	35	1	33.5	37.5	13.5	8	20	M8	20	105
GN 212.3-21-M8-25-*	21	75	59	31	35	1	33.5	37.5	13.5	8	20	M8	25	107
GN 212.3-21-M8-32-*	21	75	59	31	35	1	33.5	37.5	13.5	8	20	M8	32	109
GN 212.3-21-M8-40-*	21	75	59	31	35	1	33.5	37.5	13.5	8	20	M8	40	112
GN 212.3-21-M8-50-*	21	75	59	31	35	1	33.5	37.5	13.5	8	20	M8	50	114
GN 212.3-21-M8-63-*	21	75	59	31	35	1	33.5	37.5	13.5	8	20	M8	63	119

*Complete the description of the standard item needed by adding the type of lever (D or E).

Standard Elements	Main dimensions											Threaded stud		\triangle
Description	D	R	H~	h1	h2	h3	h4	h5	d1	d2	d3	d	l	g
GN 212.3-21-M10-20-*	21	75	59	31	35	1	33.5	37.5	13.5	8	20	M10	20	108
GN 212.3-21-M10-25-*	21	75	59	31	35	1	33.5	37.5	13.5	8	20	M10	25	111
GN 212.3-21-M10-32-*	21	75	59	31	35	1	33.5	37.5	13.5	8	20	M10	32	115
GN 212.3-21-M10-40-*	21	75	59	31	35	1	33.5	37.5	13.5	8	20	M10	40	117
GN 212.3-21-M10-50-*	21	75	59	31	35	1	33.5	37.5	13.5	8	20	M10	50	122
GN 212.3-21-M10-63-*	21	75	59	31	35	1	33.5	37.5	13.5	8	20	M10	63	126
GN 212.3-21-M10-80-*	21	75	59	31	35	1	33.5	37.5	13.5	8	20	M10	80	136
GN 212.3-24-M10-16-*	24	101	75	37	41.5	2.5	40	44.5	16	10	25	M10	16	174
GN 212.3-24-M10-20-*	24	101	75	37	41.5	2.5	40	44.5	16	10	25	M10	20	175
GN 212.3-24-M10-25-*	24	101	75	37	41.5	2.5	40	44.5	16	10	25	M10	25	177
GN 212.3-24-M10-32-*	24	101	75	37	41.5	2.5	40	44.5	16	10	25	M10	32	180
GN 212.3-24-M10-40-*	24	101	75	37	41.5	2.5	40	44.5	16	10	25	M10	40	184
GN 212.3-24-M10-50-*	24	101	75	37	41.5	2.5	40	44.5	16	10	25	M10	50	190
GN 212.3-24-M10-63-*	24	101	75	37	41.5	2.5	40	44.5	16	10	25	M10	63	197
GN 212.3-24-M10-80-*	24	101	75	37	41.5	2.5	40	44.5	16	10	25	M10	80	204
GN 212.3-24-M12-25-*	24	101	75	37	41.5	2.5	40	44.5	16	10	25	M12	25	183
GN 212.3-24-M12-32-*	24	101	75	37	41.5	2.5	40	44.5	16	10	25	M12	32	188
GN 212.3-24-M12-40-*	24	101	75	37	41.5	2.5	40	44.5	16	10	25	M12	40	194
GN 212.3-24-M12-50-*	24	101	75	37	41.5	2.5	40	44.5	16	10	25	M12	50	201
GN 212.3-24-M12-63-*	24	101	75	37	41.5	2.5	40	44.5	16	10	25	M12	63	209
GN 212.3-24-M12-80-*	24	101	75	37	41.5	2.5	40	44.5	16	10	25	M12	80	217
GN 212.3-28-M10-16-*	28	116	88	44.5	49	4.5	48.5	53	19	12	30	M10	16	277
GN 212.3-28-M10-20-*	28	116	88	44.5	49	4.5	48.5	53	19	12	30	M10	20	280
GN 212.3-28-M10-25-*	28	116	88	44.5	49	4.5	48.5	53	19	12	30	M10	25	285
GN 212.3-28-M10-32-*	28	116	88	44.5	49	4.5	48.5	53	19	12	30	M10	32	289
GN 212.3-28-M10-40-*	28	116	88	44.5	49	4.5	48.5	53	19	12	30	M10	40	311
GN 212.3-28-M10-50-*	28	116	88	44.5	49	4.5	48.5	53	19	12	30	M10	50	309
GN 212.3-28-M10-63-*	28	116	88	44.5	49	4.5	48.5	53	19	12	30	M10	63	304
GN 212.3-28-M12-16-*	28	116	88	44.5	49	4.5	48.5	53	19	12	30	M12	16	286
GN 212.3-28-M12-20-*	28	116	88	44.5	49	4.5	48.5	53	19	12	30	M12	20	287
GN 212.3-28-M12-25-*	28	116	88	44.5	49	4.5	48.5	53	19	12	30	M12	25	292
GN 212.3-28-M12-32-*	28	116	88	44.5	49	4.5	48.5	53	19	12	30	M12	32	297
GN 212.3-28-M12-40-*	28	116	88	44.5	49	4.5	48.5	53	19	12	30	M12	40	302
GN 212.3-28-M12-50-*	28	116	88	44.5	49	4.5	48.5	53	19	12	30	M12	50	309
GN 212.3-28-M12-63-*	28	116	88	44.5	49	4.5	48.5	53	19	12	30	M12	63	319
GN 212.3-28-M12-80-*	28	116	88	44.5	49	4.5	48.5	53	19	12	30	M12	80	330
GN 212.3-33-M12-25-*	33	131	100	51.5	57	6	55	60.5	23	12	32	M12	25	428
GN 212.3-33-M12-32-*	33	131	100	51.5	57	6	55	60.5	23	12	32	M12	32	425
GN 212.3-33-M12-40-*	33	131	100	51.5	57	6	55	60.5	23	12	32	M12	40	431
GN 212.3-33-M12-50-*	33	131	100	51.5	57	6	55	60.5	23	12	32	M12	50	438
GN 212.3-33-M12-63-*	33	131	100	51.5	57	6	55	60.5	23	12	32	M12	63	446
GN 212.3-33-M16-32-*	33	131	100	51.5	57	6	55	60.5	23	12	32	M16	32	440
GN 212.3-33-M16-40-*	33	131	100	51.5	57	6	55	60.5	23	12	32	M16	40	451
GN 212.3-33-M16-50-*	33	131	100	51.5	57	6	55	60.5	23	12	32	M16	50	463
GN 212.3-33-M16-63-*	33	131	100	51.5	57	6	55	60.5	23	12	32	M16	63	482
GN 212.3-33-M16-80-*	33	131	100	51.5	57	6	55	60.5	23	12	32	M16	80	504
GN 212.3-40-M16-40-*	40	146	117	64	69.5	6	68	73.5	28	14	35	M16	40	743
GN 212.3-40-M16-50-*	40	146	117	64	69.5	6	68	73.5	28	14	35	M16	50	757
GN 212.3-40-M16-63-*	40	146	117	64	69.5	6	68	73.5	28	14	35	M16	63	772
GN 212.3-40-M16-80-*	40	146	117	64	69.5	6	68	73.5	28	14	35	M16	80	797
GN 212.3-40-M20-40-*	40	146	117	64	69.5	6	68	73.5	28	14	35	M20	40	777
GN 212.3-40-M20-50-*	40	146	117	64	69.5	6	68	73.5	28	14	35	M20	50	797
GN 212.3-40-M20-63-*	40	146	117	64	69.5	6	68	73.5	28	14	35	M20	63	824
GN 212.3-40-M20-80-*	40	146	117	64	69.5	6	68	73.5	28	14	35	M20	80	856

*Complete the description of the standard item needed by adding the type of lever (D or E).