

Security lobe knobs



- **Lobe solid cap**

Glass-fibre reinforced polyamide based (PA) technopolymer with security anti-intrusion-profiled key slot. Resistant to solvents, oils, greases and other chemical agents.

- **Flange**

Technopolymer, ultrasonically welded.

- **Colour**

Black, matte finish.

- **Clamping element**

Acetal resin based (POM) technopolymer.

- **Assembly**

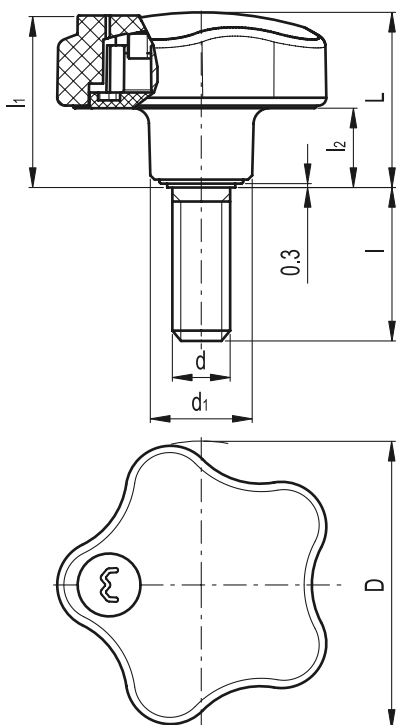
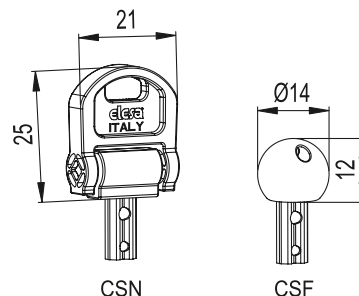
AISI 303 stainless steel threaded stud, chamfered flat end according to UNI 947 : ISO 4753 (see Technical Data on page A11).

- **Security key (to be ordered separately)**

- **CSN** (code 6951): acetal resin based (POM) technopolymer fold-away key, red colour, anti-intrusion-profiled stainless steel insert.

- **CSF** (code 6952): polyamide based (PA) technopolymer ball key, red colour, anti-intrusion-profiled stainless steel insert.

On request and for sufficient quantities the security keys can be supplied in black colour too.

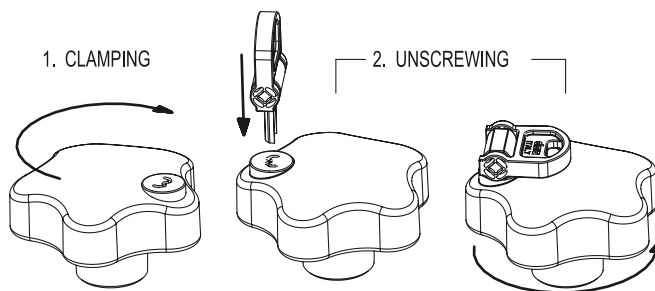


- **Security device**

VLS.S-p-INOX security lobe knobs have been designed to be unscrewed only by authorised people, provided with the security key. Without the security key, the knob turns without unscrewing.

1. Clamping: clamp the knob by screwing it as for a normal knob. Mind that the security key is not inserted.

2. Unscrewing: simply insert the security key (without turning it) and unscrew the knob.



Features and applications

The particular design of the internal device and of the flange helps the drainage of any dirt (dust, earth, liquid).

AISI 303 stainless steel, thanks to its high resistance to corrosion, allows the application of these lobe knobs on machines and equipment working in those sectors where laws or particular hygienic, climatic and environmental factors make it mandatory to use corrosion resistant materials.

Standard Elements		Main dimensions					Threaded stud		△△
Code	Description	D	L	l ₁	d ₁	l ₂	d 6g	l	g
76621*	VLS.55 S-p-M10x20-INOX	55	33	32	19	15	M10	20	44
76625*	VLS.55 S-p-M10x40-INOX	55	33	32	19	15	M10	40	52

* Keys are not supplied with the knobs, to be ordered separately