

# GN 6335.9

## Star knobs - high clamping force



- **Knob**  
Polyamide-based (PA) reinforced technopolymer. Resistant to solvents, oils, greases and other chemical agents.
- **Colour**  
Black, matte finish.
- **Threaded insert**  
Black-oxide nitrided steel.
- **Axial ball bearing**  
Hardened steel.

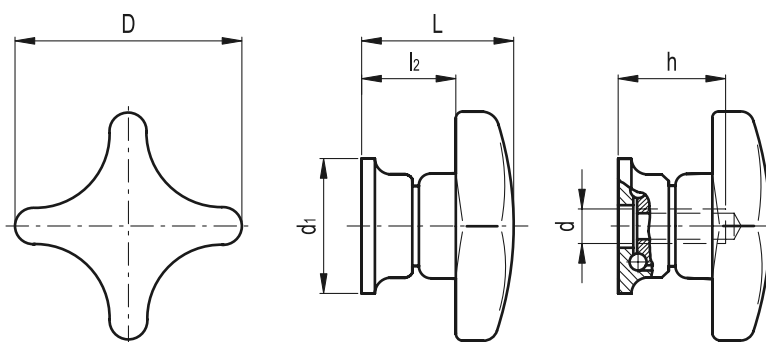
### Features and applications

GN 6335.9 star knobs have a clamping contact area which is connected to the knob via an axial ball bearing which reduces the friction between the star knob and the component avoiding any marking on the clamping area. Furthermore, they guarantee higher clamping force values with a reduced creep factor.

2

153

Clamping knobs



| Standard Elements | Main dimensions |    |                |                | Mounting hole |      | $\Delta$ |
|-------------------|-----------------|----|----------------|----------------|---------------|------|----------|
| Description       | D               | L  | d <sub>1</sub> | l <sub>2</sub> | d             | h    | g        |
| GN 6335.9-40-M6   | 40              | 27 | 24             | 15.5           | M6            | 14.5 | 40       |
| GN 6335.9-50-M8   | 50              | 34 | 25             | 22.5           | M8            | 15   | 65       |
| GN 6335.9-63-M10  | 63              | 41 | 30             | 26.5           | M10           | 19   | 105      |
| GN 6335.9-80-M12  | 80              | 53 | 35             | 34             | M12           | 28.5 | 209      |