

# GN 369

## Crank handles with revolving handle



- **Material**

Sandblasted and nickel-plated steel with arm welded to the hub.

- **Assembly**

Hub, H9 reamed hole.

- Execution **N**: with end grooving.

- Execution **A**: without end grooving.

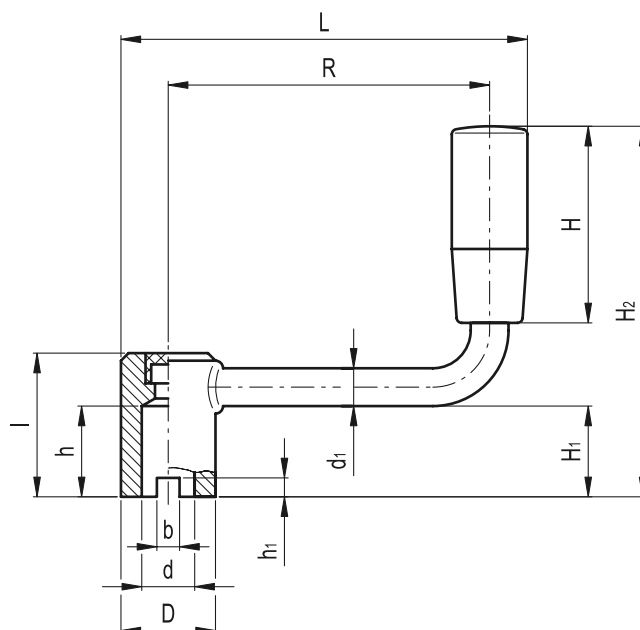
For fixing GN 369 on shafts by a grub screw see Technical Data on page A18.

- **Hub cap**

Technopolymer, black colour.

- **Revolving handle**

Type I.280 (see page 392) phenolic based (PF) Duroplast, black colour, glossy finish. Resistant to solvents, oils, greases and other chemical agents.



Standard Elements	Main dimensions								Mounting hole		Handle		⚖	
	R	L	D	d <sub>1</sub>	l	b +0.1	h <sub>1</sub>	H <sub>1</sub>	H <sub>2</sub>	d H9	h +0.5	H		Ø
GN 369-63-B10-A	63	81	18	8	28	-	-	18	74	10	18	40	18	88
GN 369-63-B10-N	63	81	18	8	28	4.5	4	18	74	10	18	40	18	87
GN 369-80-B10-A	80	98	18	8	28	-	-	18	74	10	18	40	18	94
GN 369-80-B10-N	80	98	18	8	28	4.5	4	18	74	10	18	40	18	93
GN 369-100-B12-A	100	120	20	8	30	-	-	20	88	12	20	50	21	122
GN 369-100-B12-N	100	120	20	8	30	4.5	4	20	88	12	20	50	21	121
GN 369-125-B12-A	125	145	20	8	30	-	-	20	88	12	20	50	21	132
GN 369-125-B12-N	125	145	20	8	30	4.5	4	20	88	12	20	50	21	131