

# DIN 468

## Crank handles

### • Material

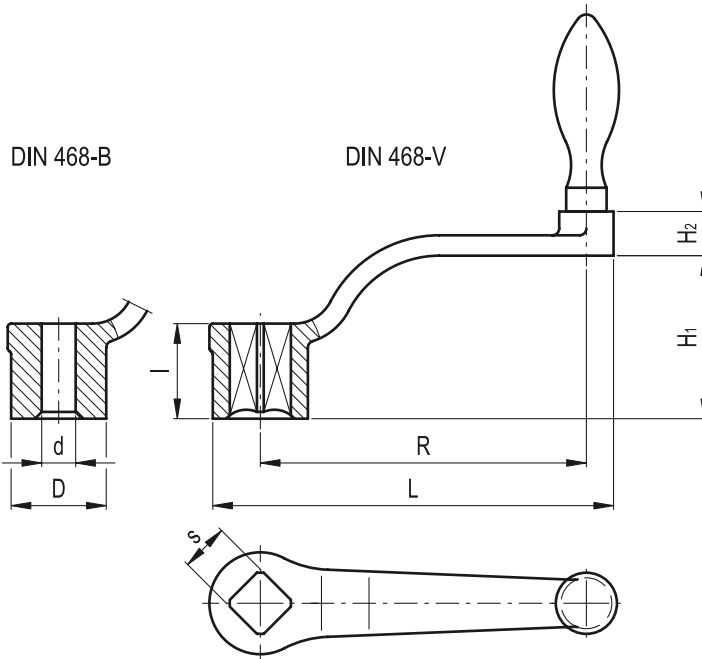
- Malleable cast iron (size 63).
- Nodular deburred cast iron, sandblasted matte finish (size 80 to 315).

### • Assembly

- Execution **B**: hub with H7 reamed through hole.
- Execution **V**: hub with H11 squared through hole in compliance with details for square DIN 79 (see page A16).

### • Handle

- Type **D**: mirror-polished steel revolving handle type DIN 98 (see page 400).
- Type **F**: mirror-polished steel fixed handle type DIN 39 (see page 400).



DIN 468-B

DIN 468-V

Standard Elements	Main dimensions					Mounting hole			Handle	△	
										Handle D	Handle F
Description	R	L	D	H <sub>1</sub>	H <sub>2</sub>	d H7	s H11	l	Ø	g	g
DIN 468-63-B6-*	63	80	20	32	11	6	-	20	16	142	132
DIN 468-63-V10-*	63	80	20	32	11	-	10x10	20	16	124	114
DIN 468-80-B8-*	80	102	24	38	13	8	-	24	18	207	195
DIN 468-80-V10-*	80	102	24	38	13	-	10x10	24	18	195	183
DIN 468-80-V12-*	80	102	24	38	13	-	12x12	24	18	185	173
DIN 468-100-B10-*	100	124	28	48	13	10	-	28	20	307	293
DIN 468-100-V12-*	100	124	28	48	13	-	12x12	28	20	295	281
DIN 468-100-V14-*	100	124	28	48	13	-	14x14	28	20	282	268
DIN 468-125-B10-*	125	154	34	55	14	10	-	34	22	477	463
DIN 468-125-V14-*	125	154	34	55	14	-	14x14	34	22	448	434
DIN 468-125-V17-*	125	154	34	55	14	-	17x17	34	22	427	413
DIN 468-160-B14-*	160	192	38	65	14	14	-	38	25	707	697
DIN 468-160-V17-*	160	192	38	65	14	-	17x17	38	25	664	650
DIN 468-160-V19-*	160	192	38	65	14	-	19x19	38	25	643	633
DIN 468-200-B17-*	200	238	44	78	21	17	-	44	28	1066	1043
DIN 468-200-V19-*	200	238	44	78	21	-	19x19	44	28	1022	999
DIN 468-200-V22-*	200	238	44	78	21	-	22x22	44	28	965	942
DIN 468-250-B17-*	250	290	48	90	21	17	-	48	32	1525	1517
DIN 468-250-V22-*	250	290	48	90	21	-	22x22	48	32	1435	1427
DIN 468-250-V24-*	250	290	48	90	21	-	24x24	48	32	1382	1374
DIN 468-315-B20-*	315	360	54	105	26	20	-	54	36	2343	2298
DIN 468-315-V24-*	315	360	54	105	26	-	24x24	54	36	2168	2123
DIN 468-315-V27-*	315	360	54	105	26	-	27x27	54	36	2092	2047

\* Complete the description of the standard item needed by adding the type of handle D or F listed in the code column.

