

GN 323-A

Solid handwheels

Material

Cast aluminium with black epoxy resin coating, turned rim.

Assembly

- Execution **B**: hub with H7 tolerance plain hole.
- Execution **K**: hub with H7 reamed hole with keyway in compliance with DIN 6885/1 P9 tolerance (see page A17).

For fixing GN 323 on shafts by a grub screw see Technical Data on page A18.

Other standard executions available

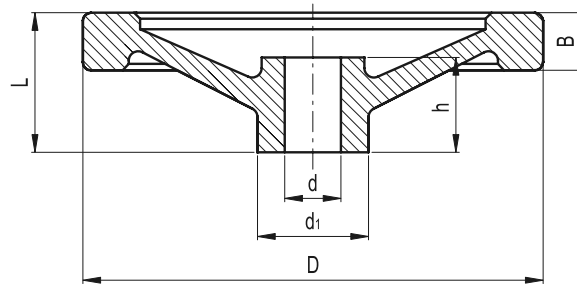
GN 323-A with GN 000.4 (see page 103) or GN 000.5 (see page 104) safety coupling bushing.

Accessories on request

Axial retaining washer GN 184 (see page 631).

Technical data

Axial and radial runout lower than IT 12.



Standard Elements	Main dimensions				Bore		\triangle
Description	D	L	B	d ₁	d H7	h	g
GN 323-80-B10-A	80	26	13	26	10	16	136
GN 323-80-B12-A	80	26	13	26	12	16	128
GN 323-80-K10-A	80	26	13	26	10	16	134
GN 323-80-K12-A	80	26	13	26	12	16	126
GN 323-100-B10-A	100	30	14	28	10	17	211
GN 323-100-B12-A	100	30	14	28	12	17	209
GN 323-100-K10-A	100	30	14	28	10	17	209
GN 323-100-K12-A	100	30	14	28	12	17	207
GN 323-125-B12-A	125	33	15	31	12	18	321
GN 323-125-B14-A	125	33	15	31	14	18	302
GN 323-125-K12-A	125	33	15	31	12	18	318
GN 323-125-K14-A	125	33	15	31	14	18	300
GN 323-140-B14-A	140	36	16.5	36	14	19	438
GN 323-140-B16-A	140	36	16.5	36	16	19	434
GN 323-140-K14-A	140	36	16.5	36	14	19	434
GN 323-140-K16-A	140	36	16.5	36	16	19	436
GN 323-160-B14-A	160	39	18	36	14	20	565
GN 323-160-B16-A	160	39	18	36	16	20	555
GN 323-160-K14-A	160	39	18	36	14	20	560
GN 323-160-K16-A	160	39	18	36	16	20	551
GN 323-200-B18-A	200	45	20.5	42	18	24	926
GN 323-200-B20-A	200	45	20.5	42	20	24	924
GN 323-200-K18-A	200	45	20.5	42	18	24	921
GN 323-200-K20-A	200	45	20.5	42	20	24	909
GN 323-250-B22-A	250	51	23	48	22	28	1546
GN 323-250-K22-A	250	51	23	48	22	28	1541



eleSa-GANTER

ELESA and GANTER models all rights reserved in accordance with the law. Always mention the source when reproducing our drawings.