

GN 321.5-A

Solid safety handwheels

Material

Cast aluminium, fine sandblasted matte surface, turned and mirror-polished rim.

Assembly

Hub with keyway in compliance with DIN 6885/2 P9 tolerance (see page A17).

GN 000.5 (see page 104) safety coupling bushing with needle bearings.

- Execution **DR**: with engagement system by pushing.

- Execution **ZI**: with engagement system by pulling.

Accessories on request

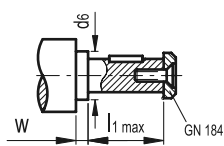
Axial retaining washer GN 184 (see page 631).

Technical data

Axial and radial runout lower than IT 12.

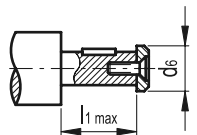


DR "Push-coupling" assembly

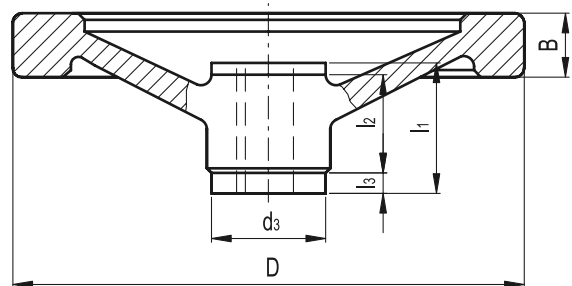
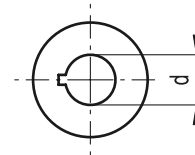
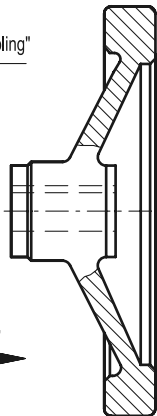


"Push-coupling"

ZI "Pull-coupling" assembly



"Pull-coupling"



Standard Elements	Main dimensions								Safety coupling bushing GN 000.5	Mounting hole	\triangle
Description	D	B	d ₃	d ₆ max.	l ₁	l ₂	l ₃	w min.		d H7	g
GN 321.5-125-K12-A-DR	125	15	29	17	42	18	12	4	GN 000.5-1	12	423
GN 321.5-125-K12-A-ZI	125	15	29	17	42	18	12	4	GN 000.5-1	12	423
GN 321.5-140-K12-A-DR	140	16.5	29	17	42	18	12	4	GN 000.5-1	12	512
GN 321.5-140-K12-A-ZI	140	16.5	29	17	42	18	12	4	GN 000.5-1	12	512
GN 321.5-140-K14-A-DR	140	16.5	33	21	48	20	14	4	GN 000.5-2	14	592
GN 321.5-140-K14-A-ZI	140	16.5	33	21	48	20	14	4	GN 000.5-2	14	592
GN 321.5-160-K14-A-DR	160	18	33	21	48	20	14	4	GN 000.5-2	14	715
GN 321.5-160-K14-A-ZI	160	18	33	21	48	20	14	4	GN 000.5-2	14	715
GN 321.5-200-K18-A-DR	200	20.5	39	26	50	24	13	4	GN 000.5-3	18	1127
GN 321.5-200-K18-A-ZI	200	20.5	39	26	50	24	13	4	GN 000.5-3	18	1127
GN 321.5-250-K22-A-DR	250	23	46	30	54	28	13	4	GN 000.5-4	22	1840
GN 321.5-250-K22-A-ZI	250	23	46	30	54	28	13	4	GN 000.5-4	22	1840