

GN 322-A

Spoked handwheels

Material

Cast aluminium, fine sandblasted matte surface, turned and mirror-polished rim.

Assembly

- Execution **B**: H7 reamed hole.

- Execution **K**: H7 reamed hole and keyway in compliance with DIN 6885/1 P9 tolerance (see page A17).

For fixing GN 322-A on shafts by a grub screw see Technical Data on page A18.



Other standard executions available

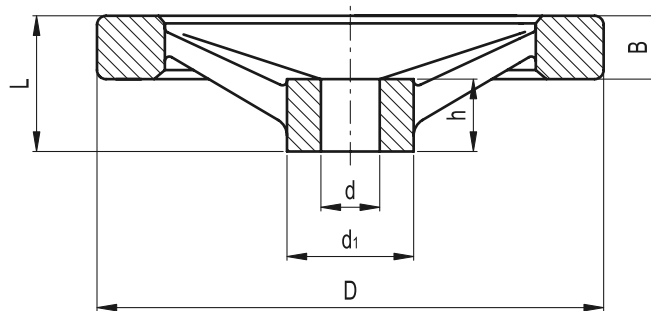
GN 322-A with GN 000.4 (see page 103) or GN 000.5 (see page 104) safety coupling bushing.

Accessories on request

Axial retaining washer type GN 184 (see page 631).

Technical data

Axial and radial runout lower than IT 12.



Standard Elements	Main dimensions				Bore		g
	D	L	B	d ₁	d H7	h	
GN 322-125-B12-A	125	33	15	31	12	18	311
GN 322-125-B14-A	125	33	15	31	14	18	308
GN 322-125-K12-A	125	33	15	31	12	18	306
GN 322-125-K14-A	125	33	15	31	14	18	309
GN 322-140-B14-A	140	36	16.5	36	14	19	411
GN 322-140-B16-A	140	36	16.5	36	16	19	394
GN 322-140-K14-A	140	36	16.5	36	14	19	409
GN 322-140-K16-A	140	36	16.5	36	16	19	392
GN 322-160-B14-A	160	39	18	36	14	20	539
GN 322-160-B16-A	160	39	18	36	16	20	530
GN 322-160-K14-A	160	39	18	36	14	20	536
GN 322-160-K16-A	160	39	18	36	16	20	527
GN 322-200-B18-A	200	45	20.5	42	18	24	892
GN 322-200-B20-A	200	45	20.5	42	20	24	885
GN 322-200-K18-A	200	45	20.5	42	18	24	881
GN 322-200-K20-A	200	45	20.5	42	20	24	888
GN 322-250-B22-A	250	51	23	48	22	28	1478
GN 322-250-B26-A	250	51	23	48	26	28	1454
GN 322-250-K22-A	250	51	23	48	22	28	1473
GN 322-250-K26-A	250	51	23	48	26	28	1449



Elesa+GANTER

ELESA and GANTER models all rights reserved in accordance with the law. Always mention the source when reproducing our drawings.