

GN 227.1

Pressed steel spoked handwheels

- **Material**

Pressed steel, epoxy resin coating.

- **Colour**

RAL 9005 black, glossy finish.

- **Assembly**

- Execution **B**: welded hub, H9 reamed through hole.
 - Execution **K**: welded hub, H9 reamed through hole and keyway in compliance with DIN 6885/1 P9 tolerance (see page A17).
 - Execution **V**: welded hub, H11 square through hole.
- For fixing GN 227.1 on shafts by a grub screw see Technical Data on page A18.

Features and applications

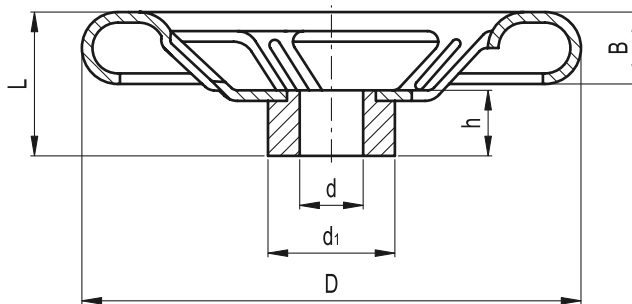
Pressed steel spoked handwheels GN 227.1 are renowned for their high mechanical strength and their resistance to shocks and knocks.



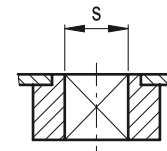
1
68

Operating elements

GN 227.1-B



GN 227.1-V



Standard Elements Description	Main dimensions				Mounting hole			Spokes no.	g
	D	L	B	d ₁	d H9	s H11	h		
GN 227.1-125-B11-SW	125	29	18	30	11	-	18	3	300
GN 227.1-125-K11-SW	125	29	18	30	11	-	18	3	325
GN 227.1-125-V11-SW	125	29	18	30	-	11x11	18	3	280
GN 227.1-160-B12-SW	160	37	22	30	12	-	20	4	400
GN 227.1-160-K12-SW	160	37	22	30	12	-	20	4	425
GN 227.1-160-V12-SW	160	37	22	30	-	12x12	20	4	400
GN 227.1-200-B14-SW	200	46	22	40	14	-	24	4	800
GN 227.1-200-K14-SW	200	46	22	40	14	-	24	4	830
GN 227.1-200-V14-SW	200	46	22	40	-	14x14	24	4	785
GN 227.1-250-B17-SW	250	52	30	45	17	-	28	5	1450
GN 227.1-250-K17-SW	250	52	30	45	17	-	28	5	1470
GN 227.1-250-V17-SW	250	52	30	45	-	17x17	28	5	1455
GN 227.1-315-B19-SW	315	64	35	55	19	-	33	5	2350
GN 227.1-315-K19-SW	315	64	35	55	19	-	33	5	2370
GN 227.1-315-V19-SW	315	64	35	55	-	19x19	33	5	2280
GN 227.1-400-B24-SW	400	82	40	65	24	-	38	5	4140
GN 227.1-400-K24-SW	400	82	40	65	24	-	38	5	4125
GN 227.1-400-V24-SW	400	82	40	65	-	24x24	38	5	4070